

# Recombinant Human PEBP1 Protein, Myc/DDK-tagged, C13 and N15-labeled

Cat. No. PEBP1-2042H Lot. No. (See product label)

## SPECIFICATION

<b>Product Overview</b>	PEBP1 MS Standard C13 and N15-labeled recombinant protein (NP_002558) with a C-terminal MYC/DDK tag, was expressed in HEK293 cells.
<b>Species</b>	Human
<b>Source</b>	HEK293
<b>Description</b>	This gene encodes a member of the phosphatidylethanolamine-binding family of proteins and has been shown to modulate multiple signaling pathways, including the MAP kinase (MAPK), NF-kappa B, and glycogen synthase kinase-3 (GSK-3) signaling pathways. The encoded protein can be further processed to form a smaller cleavage product, hippocampal cholinergic neurostimulating peptide (HCNP), which may be involved in neural development. This gene has been implicated in numerous human cancers and may act as a metastasis suppressor gene. Multiple pseudogenes of this gene have been identified in the genome.
<b>Molecular Mass</b>	21.1 kDa
<b>AA Sequence</b>	MPVDLSKWSGPLSLQEVDQPHPLHVTYAGAAVDELGKVLTPQTQVKNRPTSISWD GLDSGKLYTLVLTDPDAPSRKDPKYREWVHHFLVNMKGNDISSGTVLSDYVVGSGPP KGTGLHRYVWLVEQDRPLKCDEPILSNRSGDHRGKFKVASFRKKYELRAPVAGTC YQAEWDDYVPKLYEQLSGKTRTRPLEQKLISEEDLAANDILDYKDDDDKV
<b>Purity</b>	> 80% as determined by SDS-PAGE and Coomassie blue staining

 Tel: 1-631-559-9269 1-516-512-3133

 Email: [info@creative-biomart.com](mailto:info@creative-biomart.com)  Fax: 1-631-938-8127

 45-1 Ramsey Road, Shirley, NY 11967, USA

<b>Stability</b>	Stable for 3 months from receipt of products under proper storage and handling conditions.
<b>Storage</b>	Store at -80 centigrade. Avoid repeated freeze-thaw cycles.
<b>Concentration</b>	50 µg/mL as determined by BCA
<b>Storage Buffer</b>	100 mM glycine, 25 mM Tris-HCl, pH 7.3.

## GENE INFORMATION

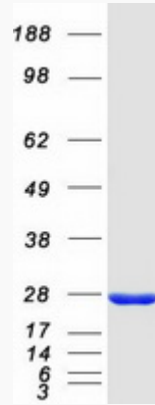
<b>Gene Name</b>	PEBP1 phosphatidylethanolamine binding protein 1 [ Homo sapiens (human) ]
<b>Official Symbol</b>	PEBP1
<b>Synonyms</b>	PEBP1; phosphatidylethanolamine binding protein 1; PBP, prostatic binding protein; phosphatidylethanolamine-binding protein 1; HCNP; hippocampal cholinergic neurostimulating peptide; PEBP; Raf kinase inhibitory protein; RKIP; neuropeptide h3; prostatic binding protein; prostatic-binding protein; raf kinase inhibitor protein; PBP; HCNPpp; PEBP-1;
<b>Gene ID</b>	5037
<b>mRNA Refseq</b>	NM_002567
<b>Protein Refseq</b>	NP_002558
<b>MIM</b>	604591
<b>UniProt ID</b>	P30086

 Tel: 1-631-559-9269 1-516-512-3133

 Email: [info@creative-biomart.com](mailto:info@creative-biomart.com)  Fax: 1-631-938-8127

 45-1 Ramsey Road, Shirley, NY 11967, USA

SDS-PAGE



 Tel: 1-631-559-9269 1-516-512-3133

 Email: [info@creative-biomart.com](mailto:info@creative-biomart.com)  Fax: 1-631-938-8127

 45-1 Ramsey Road, Shirley, NY 11967, USA