

## Active Recombinant Human PECAM1 protein, hFc-tagged

Cat. No. PECAM1-014H Lot. No. (See product label)

### SPECIFICATION

<b>Product Overview</b>	Active Recombinant Human PECAM1 protein(Met 1-Lys 601)(EAW94208.1) was expressed in HEK293 with the fused Fc region of human IgG1 at the C-terminus.
<b>Species</b>	Human
<b>Source</b>	HEK293
<b>ProteinLength</b>	1-601 aa
<b>Form</b>	Lyophilized from sterile 100mM Glycine, 10mM NaCl, 50mM Tris, pH 7.5.
<b>Bio-activity</b>	Measured by its ability of the immobilized protein to support the adhesion of Jurkat human acute T cell leukemia cells. When $8 \times 10^4$ cells/well are added to sCD31-Fc coated plates (1.25 $\mu$ g/mL, 100 $\mu$ L/well) in the presence of 20ng/mL PMA, approximately 20-45% will adhere after 30 minutes at 37°C.
<b>Molecular Mass</b>	The recombinant human CD31/Fc is a disulfide-linked homodimer.The reduced monomer consists of 812 amino acids and predicts a molecular mass of 91.2 kDa. As a result of glycosylation, the rhCD31/Fc monomer migrates as approximately 130-140 kDa band in SDS-PAGE under reducing conditions.
<b>Endotoxin</b>	< 1.0 EU per $\mu$ g of the protein as determined by the LAL method.
<b>Purity</b>	> 95 % as determined by SDS-PAGE

 Tel: 1-631-559-9269 1-516-512-3133

 Email: [info@creative-biomart.com](mailto:info@creative-biomart.com)  Fax: 1-631-938-8127

 45-1 Ramsey Road, Shirley, NY 11967, USA

**Storage** Store it under sterile conditions at -20°C to -80°C upon receiving. Recommend to aliquot the protein into smaller quantities for optimal storage. Avoid repeated freeze-thaw cycles.

**Reconstitution** It is recommended that sterile water be added to the vial to prepare a stock solution of 0.2 ug/ul. Centrifuge the vial at 4°C before opening to recover the entire contents.

## GENE INFORMATION

**Gene Name** [PECAM1 platelet/endothelial cell adhesion molecule 1 \[ Homo sapiens \]](#)

**Official Symbol** [PECAM1](#)

**Synonyms** [PECAM1](#); platelet/endothelial cell adhesion molecule 1; platelet/endothelial cell adhesion molecule; platelet endothelial cell adhesion molecule; CD31; CD31 antigen; PECA1; GPIIA; PECAM-1; endoCAM; CD31/EndoCAM; FLJ34100; FLJ58394;

**Gene ID** [5175](#)

**mRNA Refseq** [NM\\_000442](#)

**Protein Refseq** [NP\\_000433](#)

**MIM** [173445](#)

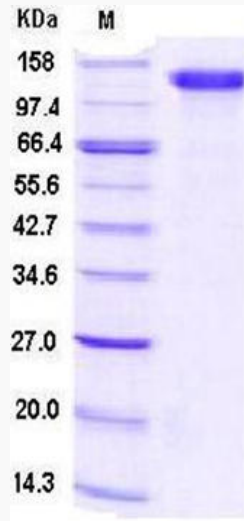
**UniProt ID** [P16284](#)

 Tel: 1-631-559-9269 1-516-512-3133

 Email: [info@creative-biomart.com](mailto:info@creative-biomart.com)  Fax: 1-631-938-8127

 45-1 Ramsey Road, Shirley, NY 11967, USA

**SDS-PAGE**



 Tel: 1-631-559-9269 1-516-512-3133

 Email: [info@creative-biomart.com](mailto:info@creative-biomart.com)  Fax: 1-631-938-8127

 45-1 Ramsey Road, Shirley, NY 11967, USA