

Recombinant Human PECAM1 Protein

Cat. No. PECAM1-01H Lot. No. (See product label)

SPECIFICATION

| | |
|-------------------------|---|
| Product Overview | Recombinant human PECAM1 protein without tag was expressed in E. coli. |
| Species | Human |
| Source | E.coli |
| Description | The protein encoded by this gene is found on the surface of platelets, monocytes, neutrophils, and some types of T-cells, and makes up a large portion of endothelial cell intercellular junctions. The encoded protein is a member of the immunoglobulin superfamily and is likely involved in leukocyte migration, angiogenesis, and integrin activation. |
| Molecular Mass | 13 kDa |
| AA Sequence | LRKAKAKQMPVEMSRPAVPLLNSNNEKMSDPNMEANSHYGHNDDVRNHAMKPIND NKEPLNSDVQYTEVQVSSAESHKDLGKKDTETVYSEVRKAVPDAVESRYSRTEGSL DGT |
| Purity | > 90 % by SDS-PAGE |
| Storage | Store it under sterile conditions at -20 to -80 centigrade. It is recommended that the protein be aliquoted for optimal storage. Avoid repeated freeze-thaw cycles. |
| Concentration | 1.0 mg/mL |

 Tel: 1-631-559-9269 1-516-512-3133

 Email: info@creative-biomart.com  Fax: 1-631-938-8127

 45-1 Ramsey Road, Shirley, NY 11967, USA

Storage Buffer 50 mM Tris-Acetate, pH 7.5, 1 mM EDTA and 10% Glycerol

GENE INFORMATION

Gene Name PECAM1 platelet and endothelial cell adhesion molecule 1 [Homo sapiens (human)]

Official Symbol PECAM1

Synonyms PECAM1; platelet and endothelial cell adhesion molecule 1; CD31; PECA1; GPIIA'; PECAM-1; endoCAM; CD31/EndoCAM; platelet endothelial cell adhesion molecule; CD31 antigen; platelet endothelial cell adhesion molecule-1

Gene ID 5175

mRNA Refseq NM_000442

Protein Refseq NP_000433

MIM 173445

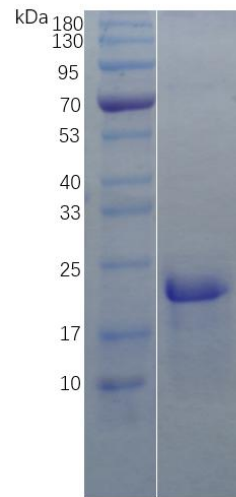
UniProt ID P16284

 Tel: 1-631-559-9269 1-516-512-3133

 Email: info@creative-biomart.com  Fax: 1-631-938-8127

 45-1 Ramsey Road, Shirley, NY 11967, USA

SDS-PAGE



Reducing SDS-PAGE analysis profile of purified CD31 (CBB stained)

 Tel: 1-631-559-9269 1-516-512-3133

 Email: info@creative-biomart.com  Fax: 1-631-938-8127

 45-1 Ramsey Road, Shirley, NY 11967, USA