

## Recombinant Human PECAM1 Protein, C-His-tagged

Cat. No. PECAM1-114H Lot. No. (See product label)

### SPECIFICATION

<b>Product Overview</b>	Recombinant Human PECAM1 Protein with C-His tag was expressed in E. coli.
<b>Species</b>	Human
<b>Source</b>	E.coli
<b>Description</b>	CD31 (Platelet Endothelial Cell Adhesion Molecule-1: PECAM-1), a member of the Ig superfamily of cell adhesion molecules, is expressed by circulating platelets, monocytes, neutrophils, some T cells, and endothelial cells and modulates cell adhesion, endothelial cell migration, and angiogenesis. CD31 is phosphorylated on Tyr686 at the cytoplasmic carboxy-terminal tail upon various stimuli (e.g. mechanical or oxidative stress), presumably by Src family members. The tyrosine phosphorylation mediates associations with a number of SH2 domain-containing binding partners such as PI3 kinase, SHIP, PLC $\gamma$ , and SHP-2. Thus, CD31 serves as a scaffold for various signaling molecules.
<b>Molecular Mass</b>	~63 kDa
<b>AA Sequence</b>	QENSFTINSVDMKSLPDWTVQNGKNLTLQCFADVSTTSHVKPQHQMFLFYKDDVLFY NISSMKSTESYFIPEVRIYDSGTYKCTVIVNNKEKTTAEYQVLVEGVPSPRVTLDKKE AIQGGIVRVNCSVPEEKAPIHFTIEKLELNEKMVCLKREKNSRDQNFVILEFPVEEQD RVLSFRCQARIISGIHMQTSESTKSELVTVTESFSTPKFHISPTGMIMEGAQLHIKCTI QVTHLAQEFPEIIIQKDKAIVAHNRHGNKAVYSVMAMVEHSGNYTCKVESSRISKVSS IVVNITELFSKPELESSFTHLDQGERLNLSCSIPGAPPANFTIQKEDTIVSQTQDFTKIA

 Tel: 1-631-559-9269 1-516-512-3133

 Email: [info@creative-biomart.com](mailto:info@creative-biomart.com)  Fax: 1-631-938-8127

 45-1 Ramsey Road, Shirley, NY 11967, USA

SKSDSGTYICTAGIDKVVKKSNTVQIVVCEMLSQPRISYDAQFEVIKGGQTIEVRCE  
 GTLPISYQLLKTSKVLENSTKNSNDPAVFKDNPTEDVEYQCVADNCHSHAKMLSEVL  
 RVKVIAPVDEVQISILSSKVVESGEDIVLQCAVNEGSGPITYKFYREKEGKPFYQMTS  
 NATQAFWTKQKASKEQEGEYYCTAFNRANHASSVPRSKILTVRVILAPWKK

**Purity**

Transferred into competent cells and the supernatant was purified by NI column affinity chromatography and the purity is > 85% (by SDS-PAGE).

**Notes**

For research use only, not for use in diagnostic procedure.

**Storage**

Store at 4 centigrade short term. Aliquot and store at -20 centigrade long term. Avoid freeze-thaw cycles.

**Concentration**

≥0.5 mg/mL

**Storage Buffer**

PBS, 4M Urea, pH7.4

## GENE INFORMATION

**Gene Name**

PECAM1 platelet/endothelial cell adhesion molecule 1 [ Homo sapiens (human) ]

**Official Symbol**

PECAM1

**Synonyms**

PECAM1; platelet/endothelial cell adhesion molecule 1; platelet/endothelial cell adhesion molecule; platelet endothelial cell adhesion molecule; CD31; CD31 antigen; PECA1; GPIIA; PECAM-1; endoCAM; CD31/EndoCAM; FLJ34100; FLJ58394;

**Gene ID**

5175

**mRNA Refseq**

NM\_000442

 Tel: 1-631-559-9269 1-516-512-3133

 Email: [info@creative-biomart.com](mailto:info@creative-biomart.com)  Fax: 1-631-938-8127

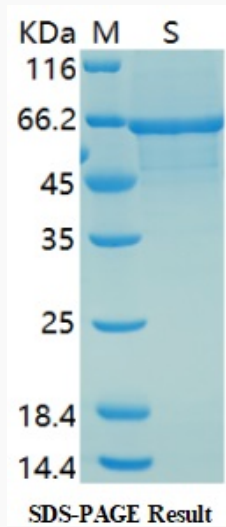
 45-1 Ramsey Road, Shirley, NY 11967, USA

**Protein Refseq** NP\_000433

**MIM** 173445

**UniProt ID** P16284

**SDS-PAGE**



 Tel: 1-631-559-9269 1-516-512-3133

 Email: [info@creative-biomart.com](mailto:info@creative-biomart.com)  Fax: 1-631-938-8127

 45-1 Ramsey Road, Shirley, NY 11967, USA