

Active Recombinant Human PECAM1 protein, His-tagged

Cat. No. PECAM1-2629H Lot. No. (See product label)

SPECIFICATION

Product Overview Active Recombinant Human PECAM-1/CD31 Protein is produced by HEK293 cells expression system. The target protein is expressed with sequence (Gln28-Lys601) of human CD31/PECAM1 (Accession #NP_000433.4) fused with a 6xHis tag at the C-terminus.

Species Human

Source HEK293

ProteinLength Gln28-Lys601

Form Lyophilized from a 0.22 µm filtered solution of PBS, pH 7.4.

Bio-activity

- 1.Measured by its binding ability in a functional ELISA. Immobilized Human CD31 at 1 µg/mL (100 µL/well) can bind Human CTNNB1 with a linear range of 9.7 ng/mL-1.5 µg/mL.
- 2.Measured by the ability of the immobilized protein to support the adhesion of Jurkat human acute T cell leukemia cells. When 8×10⁴ cells/well are added to CD31 coated plates (5µg/mL, 100 µL/well) in the presence of 10 µg/mL PHA, approximately 60-70% will adhere after 30 minutes at 37°C.
- 3.Measured by its binding ability in a functional ELISA. Immobilized APC anti-human CD31 Antibody at 1µg/mL (100 µL/well) can bind Human CD31 Protein with a linear range of 4-25.8 ng/mL.

Molecular Mass 85-105 kDa

 Tel: 1-631-559-9269 1-516-512-3133

 Email: info@creative-biomart.com  Fax: 1-631-938-8127

 45-1 Ramsey Road, Shirley, NY 11967, USA

Endotoxin	< 0.1 EU/μg of the protein by LAL method.
Purity	> 90% by SDS-PAGE.
Storage	Store the lyophilized protein at -20°C to -80 °C for long term. After reconstitution, the protein solution is stable at -20 °C for 3 months, at 2-8 °C for up to 1 week.
Reconstitution	Reconstitute to a concentration of 0.1-0.5 mg/mL in sterile distilled water.

GENE INFORMATION

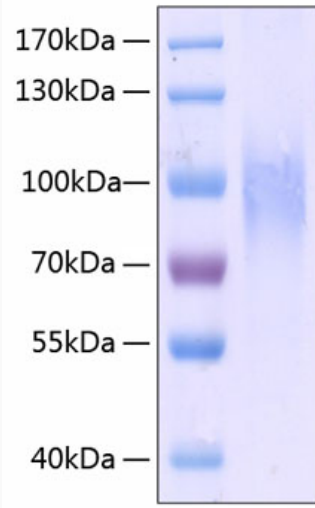
Gene Name	PECAM1 platelet/endothelial cell adhesion molecule 1 [Homo sapiens]
Official Symbol	PECAM1
Synonyms	PECAM1; platelet/endothelial cell adhesion molecule 1; platelet/endothelial cell adhesion molecule; platelet endothelial cell adhesion molecule; CD31; CD31 antigen; PECA1; GPIIA; PECAM-1; endoCAM; CD31/EndoCAM; FLJ34100; FLJ58394;
Gene ID	5175
mRNA Refseq	NM_000442
Protein Refseq	NP_000433
MIM	173445
UniProt ID	P16284

 Tel: 1-631-559-9269 1-516-512-3133

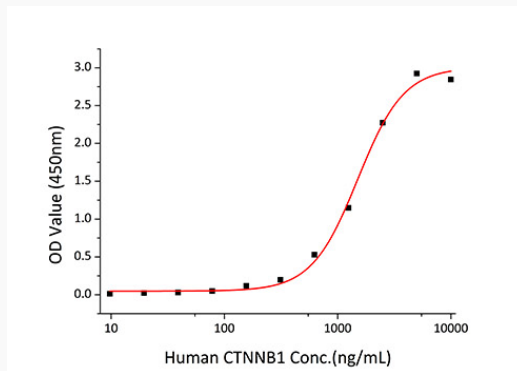
 Email: info@creative-biomart.com  Fax: 1-631-938-8127

 45-1 Ramsey Road, Shirley, NY 11967, USA

SDS-PAGE



Bio-activity



 Tel: 1-631-559-9269 1-516-512-3133

 Email: info@creative-biomart.com  Fax: 1-631-938-8127

 45-1 Ramsey Road, Shirley, NY 11967, USA