

## Recombinant Human PECAM1 Protein, His-tagged

**Cat. No.** PECAM1-507H    **Lot. No.** (See product label)

### SPECIFICATION

<b>Product Overview</b>	Recombinant Human PECAM1(Asp199~Lys287) fused with His tag at N-terminal was expressed in E. coli.
<b>Species</b>	Human
<b>Source</b>	E.coli
<b>ProteinLength</b>	Asp199~Lys287
<b>Description</b>	The protein encoded by this gene is found on the surface of platelets, monocytes, neutrophils, and some types of T-cells, and makes up a large portion of endothelial cell intercellular junctions. The encoded protein is a member of the immunoglobulin superfamily and is likely involved in leukocyte migration, angiogenesis, and integrin activation.
<b>Form</b>	PBS, pH7.4, containing 0.01% SKL, 1mM DTT, 5% Trehalose and Proclin300.
<b>Molecular Mass</b>	11.5kDa
<b>Identity</b>	Reconstitute in PBS or others
<b>Endotoxin</b>	<1.0EU per 1g (determined by the LAL method)
<b>Purity</b>	> 95%

 Tel: 1-631-559-9269    1-516-512-3133

 Email: [info@creative-biomart.com](mailto:info@creative-biomart.com)     Fax: 1-631-938-8127

 45-1 Ramsey Road, Shirley, NY 11967, USA

<b>Applications</b>	Positive Control; Immunogen; SDS-PAGE; WB. If bio-activity of the protein is needed, please check active protein
<b>Stability</b>	The thermal stability is described by the loss rate. The loss rate was determined by accelerated thermal degradation test, that is, incubate the protein at 37 centigrade for 48h, and no obvious degradation and precipitation were observed. The loss rate is less than 5% within the expiration date under appropriate storage condition.
<b>Storage</b>	Avoid repeated freeze/thaw cycles. Store at 2-8 centigrade for one month. Aliquot and store at -80 centigrade for 12 months.
<b>Reconstitution</b>	Reconstitute in PBS or others

## GENE INFORMATION

<b>Gene Name</b>	<a href="#">PECAM1 platelet/endothelial cell adhesion molecule 1 [ Homo sapiens ]</a>
<b>Official Symbol</b>	<a href="#">PECAM1</a>
<b>Synonyms</b>	PECAM1; platelet/endothelial cell adhesion molecule 1; platelet/endothelial cell adhesion molecule; platelet endothelial cell adhesion molecule; CD31; CD31 antigen; PECA1; GPIIA; PECAM-1; endoCAM; CD31/EndoCAM; FLJ34100; FLJ58394;
<b>Gene ID</b>	<a href="#">5175</a>
<b>mRNA Refseq</b>	<a href="#">NM_000442</a>
<b>Protein Refseq</b>	<a href="#">NP_000433</a>
<b>MIM</b>	<a href="#">173445</a>

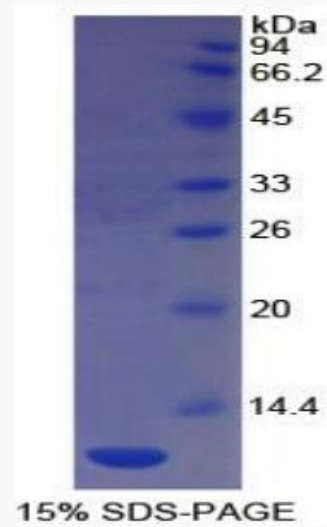
 Tel: 1-631-559-9269 1-516-512-3133

 Email: [info@creative-biomart.com](mailto:info@creative-biomart.com)  Fax: 1-631-938-8127

 45-1 Ramsey Road, Shirley, NY 11967, USA

UniProt ID

P16284



 Tel: 1-631-559-9269 1-516-512-3133

 Email: [info@creative-biomart.com](mailto:info@creative-biomart.com)  Fax: 1-631-938-8127

 45-1 Ramsey Road, Shirley, NY 11967, USA