

# Recombinant Human PECAM1 Protein, Myc/DDK-tagged, C13 and N15-labeled

Cat. No. PECAM1-5845H Lot. No. (See product label)

## SPECIFICATION

### Product Overview

PECAM1 MS Standard C13 and N15-labeled recombinant protein (NP\_000433) with a C-terminal MYC/DDK tag, was expressed in HEK293 cells.

### Species

Human

### Source

HEK293

### Description

The protein encoded by this gene is found on the surface of platelets, monocytes, neutrophils, and some types of T-cells, and makes up a large portion of endothelial cell intercellular junctions. The encoded protein is a member of the immunoglobulin superfamily and is likely involved in leukocyte migration, angiogenesis, and integrin activation.

### Molecular Mass

82.4 kDa

### AA Sequence

MQPRWAQGATMWLGVLLTLLCSSLEGQENSFTINSVDMKSLPDWTVQNGKNLTL  
 QCFADVSTTSHVKPQHQMFLFYKDDVLFYNISSMKSTESYFIPEVRIYDSGTYKCTVIV  
 NNKEKTTAEYQVLVEGVSPRVTLDKKEAIQGGIVRVNCSVPPEEKAPIHFTIEKLELN  
 EKMVKLKREKNSRDQNFVILEFPVEEQDRVLSFRCQARIISGIHMQTSESTKSELVTV  
 TESFSTPKFHISPTGMIMEGAQLHIKCTIQVTHLAQEFPEIIIIQKDKAIVAHNRHGNKAV  
 YSVMAMVEHSGNYTCKVESSRISKVSSIVVNITELFSKPELESSFTHLDQGERLNLSC  
 SIPGAPPANFTIQKEDTIVSQTQDFTKIASKSDSGTYICTAGIDKVVKKSNTVQIVVCE  
 MLSQPRISYDAQFEVIKGQTIEVRCEISISGLPISYQLLKTSKVLENSTKNSNDPAVFK

 Tel: 1-631-559-9269 1-516-512-3133

 Email: [info@creative-biomart.com](mailto:info@creative-biomart.com)  Fax: 1-631-938-8127

 45-1 Ramsey Road, Shirley, NY 11967, USA

DNPTEDVEYQCVADNCHSHAKMLSEVLRVKVIAPVDEVQISILSSKVVESGEDIVLQC  
 AVNEGSGPITYKFYREKEGKPFYQMTSNATQAFWTKQKANKEQEGEYYCTAFNRA  
 NHASSVPRSKILTVRVILAPWKKGLIAVVIIGVIIALLIIAAKCYFLRKAKAKQMPVEMSR  
 PAVPLLNSNNEKMSDPNMEANSHYGHNDVGNHAMKPINDNKEPLNSDVQYTEVQ  
 VSSAESHKDLGKKDTETVYSEVRKAVPDAVESRYSRTEGSLDGTTRTRPLEQKLISE  
 EDLAANDILDYKDDDDKV

**Purity** > 80% as determined by SDS-PAGE and Coomassie blue staining

**Stability** Stable for 3 months from receipt of products under proper storage and handling conditions.

**Storage** Store at -80 centigrade. Avoid repeated freeze-thaw cycles.

**Concentration** 50 µg/mL as determined by BCA

**Storage Buffer** 100 mM glycine, 25 mM Tris-HCl, pH 7.3.

## GENE INFORMATION

**Gene Name** [PECAM1 platelet/endothelial cell adhesion molecule 1 \[ Homo sapiens \(human\) \]](#)

**Official Symbol** [PECAM1](#)

**Synonyms** PECAM1; platelet/endothelial cell adhesion molecule 1; platelet/endothelial cell adhesion molecule; platelet endothelial cell adhesion molecule; CD31; CD31 antigen; PECA1; GPIIA; PECAM-1; endoCAM; CD31/EndoCAM; FLJ34100; FLJ58394;

**Gene ID** [5175](#)

**mRNA Refseq** [NM\\_000442](#)

 Tel: 1-631-559-9269 1-516-512-3133

 Email: [info@creative-biomart.com](mailto:info@creative-biomart.com)  Fax: 1-631-938-8127

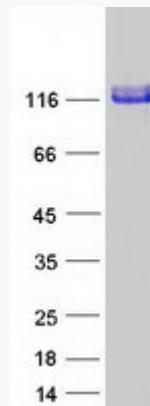
 45-1 Ramsey Road, Shirley, NY 11967, USA

**Protein Refseq** NP\_000433

**MIM** 173445

**UniProt ID** P16284

**SDS-PAGE**



 Tel: 1-631-559-9269 1-516-512-3133

 Email: [info@creative-biomart.com](mailto:info@creative-biomart.com)  Fax: 1-631-938-8127

 45-1 Ramsey Road, Shirley, NY 11967, USA