

Active Recombinant Human PECAM1 protein, His-tagged

Cat. No. PECAM1-647H Lot. No. (See product label)

SPECIFICATION

Product Overview	Active Recombinant Human PECAM1 protein(Met 1-Lys 601)(EAW94208.1) was expressed in HEK293 with a polyhistidine tag at the C-terminus.
Species	Human
Source	HEK293
ProteinLength	1-601 aa
Form	Lyophilized from sterile PBS, pH 7.4.
Bio-activity	Measured by the ability of the immobilized protein to support the adhesion of Jurkat human acute T cell leukemia cells. When 8×10^4 cells/well are added to CD31-His coated plates (10 μ g/mL, 100 μ L/well) in the presence of 20 ng/mL PMA, approximately 35-45% will adhere after 30 minutes at 37°C.
Molecular Mass	The secreted recombinant human CD31 consists of 585 amino acids after removal and predicts a molecular mass of 66 kDa. As a result of glycosylation, the rhCD31 migrates as approximately 100-110 kDa band in SDS-PAGE under reducing conditions.
Endotoxin	< 1.0 EU per μ g of the protein as determined by the LAL method.
Purity	> 97 % as determined by SDS-PAGE

 Tel: 1-631-559-9269 1-516-512-3133

 Email: info@creative-biomart.com  Fax: 1-631-938-8127

 45-1 Ramsey Road, Shirley, NY 11967, USA

Storage Store it under sterile conditions at -20°C to -80°C upon receiving. Recommend to aliquot the protein into smaller quantities for optimal storage. Avoid repeated freeze-thaw cycles.

Reconstitution It is recommended that sterile water be added to the vial to prepare a stock solution of 0.2 ug/ul. Centrifuge the vial at 4°C before opening to recover the entire contents.

GENE INFORMATION

Gene Name [PECAM1 platelet/endothelial cell adhesion molecule 1 \[Homo sapiens \]](#)

Official Symbol [PECAM1](#)

Synonyms PECAM1; platelet/endothelial cell adhesion molecule 1; platelet/endothelial cell adhesion molecule; platelet endothelial cell adhesion molecule; CD31; CD31 antigen; PECA1; GPIIA; PECAM-1; endoCAM; CD31/EndoCAM; FLJ34100; FLJ58394;

Gene ID [5175](#)

mRNA Refseq [NM_000442](#)

Protein Refseq [NP_000433](#)

MIM [173445](#)

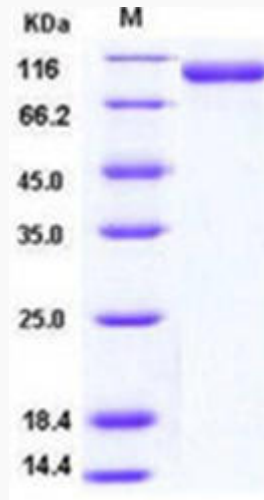
UniProt ID [P16284](#)

 Tel: 1-631-559-9269 1-516-512-3133

 Email: info@creative-biomart.com  Fax: 1-631-938-8127

 45-1 Ramsey Road, Shirley, NY 11967, USA

SDS-PAGE



 Tel: 1-631-559-9269 1-516-512-3133

 Email: info@creative-biomart.com  Fax: 1-631-938-8127

 45-1 Ramsey Road, Shirley, NY 11967, USA