

Recombinant Human PEER Protein, Myc/DDK-tagged, C13 and N15-labeled

Cat. No. PEER-6171H **Lot. No.** (See product label)

SPECIFICATION

Product Overview	PEER MS Standard C13 and N15-labeled recombinant protein (NP_060911) with a C-terminal MYC/DDK tag, was expressed in HEK293 cells.
Species	Human
Source	HEK293
Description	Participates in chain elongation of fatty acids. Has no 2,4-dienoyl-CoA reductase activity.
Molecular Mass	32.5 kDa
AA Sequence	MASWAKGRSYLAPGLLQGQVAIVTGGATGIGKAIVKELLELGSNVVIASRKLERLKSA ADELQANLPPTKQARVPIQCNIRNEEEVNNLVKSTLDTFGKINFLVNNGGGQFLSPA EHISSKGWHAVLETNLTGTFYMCKAVYSSWMKEHGGSSIVNIIVPTKAGFPLAVHSGA ARAGVYNLTKSLALEWACSGIRINCVAPGVIYSQTAVENYGSWGQSFEGSFQKIPA KRIGVPEEVSSVVCFLLSAASFITGQSVDVDGGRSLYTHSYEVPDHDNWPKGAGD LSVVKMKMETFKEKAKLTRTRPLEQKLISEEDLAANDILDYKDDDDKV
Purity	> 80% as determined by SDS-PAGE and Coomassie blue staining
Stability	Stable for 3 months from receipt of products under proper storage and handling conditions.

 Tel: 1-631-559-9269 1-516-512-3133

 Email: info@creative-biomart.com  Fax: 1-631-938-8127

 45-1 Ramsey Road, Shirley, NY 11967, USA

Storage	Store at -80 centigrade. Avoid repeated freeze-thaw cycles.
Concentration	50 µg/mL as determined by BCA
Storage Buffer	100 mM glycine, 25 mM Tris-HCl, pH 7.3.
GENE INFORMATION	
Gene Name	PECR peroxisomal trans-2-enoyl-CoA reductase [Homo sapiens (human)]
Official Symbol	PECR
Synonyms	PECR; peroxisomal trans-2-enoyl-CoA reductase; HSA250303; SDR29C1; short chain dehydrogenase/reductase family 29C; member 1; TERP; DCR-RP; pVI-ARL; 2,4-dienoyl-CoA reductase-related protein; putative short chain alcohol dehydrogenase; short chain dehydrogenase/reductase family 29C, member 1; DCRRP; PVIARL; HPDHASE;
Gene ID	55825
mRNA Refseq	NM_018441
Protein Refseq	NP_060911
MIM	605843
UniProt ID	Q9BY49

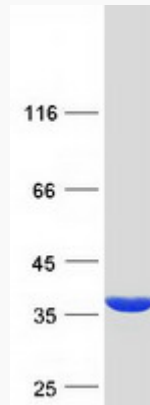
 Tel: 1-631-559-9269 1-516-512-3133

 Email: info@creative-biomart.com  Fax: 1-631-938-8127

 45-1 Ramsey Road, Shirley, NY 11967, USA



SDS-PAGE



Tel: 1-631-559-9269 1-516-512-3133

Email: info@creative-biomart.com Fax: 1-631-938-8127

45-1 Ramsey Road, Shirley, NY 11967, USA