

# Recombinant Human PELO Protein, Myc/DDK-tagged, C13 and N15-labeled

**Cat. No.** PELO-5356H    **Lot. No.** (See product label)

## SPECIFICATION

<b>Product Overview</b>	PELO MS Standard C13 and N15-labeled recombinant protein (NP_057030) with a C-terminal MYC/DDK tag, was expressed in HEK293 cells.
<b>Species</b>	Human
<b>Source</b>	HEK293
<b>Description</b>	This gene encodes a protein which contains a conserved nuclear localization signal. The encoded protein may have a role in spermatogenesis, cell cycle control, and in meiotic cell division.
<b>Molecular Mass</b>	43.4 kDa
<b>AA Sequence</b>	<p>MKLVRKNIKDNAGQVTLVPEEPEDMWHTYNLVQVGDLSLRASTIRKVKQTESSTGSV            GSNRVRTTLTLCVEAIDFDSQACQLRVKGTNIQENEYVKMGAYHTIELEPNRQFTLA            KKQWDSVVLERIEQACDPAWSADVAAVVMQEGLAHICLVTPSMTLTRAKVEVNIPR            KRKGNCSQHDRALERFYEQVVQAIQRHIHFDVVKCILVASPGFVREQFCDYMFQQA            VKTDNKLLENRSKFLQVHASSGHKYSLKEALCDPTVASRLSDTKAAGEVKALDDFY            KMLQHEPDRAFYGLKQVEKANEAMAIDTLLISDELFRHQDVATRSRYVRLVDSVKEN            AGTVRIFSSLHVSQEQLSQTGVAAILRFPPELSDQEGDSSSEEDTRTRPLEQKLIS            EEDLAANDILDYKDDDDKV</p>
<b>Purity</b>	> 80% as determined by SDS-PAGE and Coomassie blue staining

 Tel: 1-631-559-9269    1-516-512-3133

 Email: [info@creative-biomart.com](mailto:info@creative-biomart.com)     Fax: 1-631-938-8127

 45-1 Ramsey Road, Shirley, NY 11967, USA

<b>Stability</b>	Stable for 3 months from receipt of products under proper storage and handling conditions.
<b>Storage</b>	Store at -80 centigrade. Avoid repeated freeze-thaw cycles.
<b>Concentration</b>	50 µg/mL as determined by BCA
<b>Storage Buffer</b>	100 mM glycine, 25 mM Tris-HCl, pH 7.3.

## GENE INFORMATION

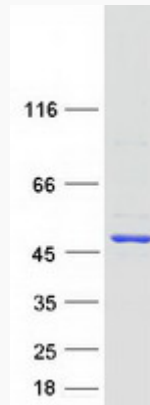
<b>Gene Name</b>	PELO pelota mRNA surveillance and ribosome rescue factor [ Homo sapiens (human) ]
<b>Official Symbol</b>	PELO
<b>Synonyms</b>	PELO; pelota homolog (Drosophila); pelota (Drosophila) homolog; protein pelota homolog; CGI-17; PRO1770;
<b>Gene ID</b>	53918
<b>mRNA Refseq</b>	NM_015946
<b>Protein Refseq</b>	NP_057030
<b>MIM</b>	605757
<b>UniProt ID</b>	Q9BRX2

 Tel: 1-631-559-9269 1-516-512-3133

 Email: [info@creative-biomart.com](mailto:info@creative-biomart.com)  Fax: 1-631-938-8127

 45-1 Ramsey Road, Shirley, NY 11967, USA

**SDS-PAGE**



 Tel: 1-631-559-9269 1-516-512-3133

 Email: [info@creative-biomart.com](mailto:info@creative-biomart.com)  Fax: 1-631-938-8127

 45-1 Ramsey Road, Shirley, NY 11967, USA