

# Recombinant Human PENK Protein, Myc/DDK-tagged, C13 and N15-labeled

**Cat. No.** PENK-2338H    **Lot. No.** (See product label)

## SPECIFICATION

<b>Product Overview</b>	PENK MS Standard C13 and N15-labeled recombinant protein (NP_001129162) with a C-terminal MYC/DDK tag, was expressed in HEK293 cells.
<b>Species</b>	Human
<b>Source</b>	HEK293
<b>Description</b>	This gene encodes a preproprotein that is proteolytically processed to generate multiple protein products. These products include the pentapeptide opioids Met-enkephalin and Leu-enkephalin, which are stored in synaptic vesicles, then released into the synapse where they bind to mu- and delta-opioid receptors to modulate the perception of pain. Other non-opioid cleavage products may function in distinct biological activities.
<b>Molecular Mass</b>	30.8 kDa
<b>AA Sequence</b>	MARFLTLCTWLLLLGPGLLATVRAECSQDCATCSYRLVRPADINFLACVMECEGKLP SLKIWETCKELLQLSKPELPQDGTSTLRENSKPEESHLLAKRYGGFMKRYGGFMKK MDELYPMEPEEEANGSEILAKRYGGFMKKDAEEDDSLANSDDLKELLETGDNRRER SHHQDGSNNEEEVSKRYGGFMRLKRSPQLEDEAKELQKRYGGFMRRVGRPEW WMDYQKRYGGFLKRFAEALPSDEEGESYSKEVPEMEKRYGGFMRFTRTRPLEQKL ISEEDLAANDILDYKDDDDKV
<b>Purity</b>	> 80% as determined by SDS-PAGE and Coomassie blue staining

 Tel: 1-631-559-9269    1-516-512-3133

 Email: [info@creative-biomart.com](mailto:info@creative-biomart.com)     Fax: 1-631-938-8127

 45-1 Ramsey Road, Shirley, NY 11967, USA

<b>Stability</b>	Stable for 3 months from receipt of products under proper storage and handling conditions.
<b>Storage</b>	Store at -80 centigrade. Avoid repeated freeze-thaw cycles.
<b>Concentration</b>	50 µg/mL as determined by BCA
<b>Storage Buffer</b>	100 mM glycine, 25 mM Tris-HCl, pH 7.3.

## GENE INFORMATION

<b>Gene Name</b>	PENK proenkephalin [ Homo sapiens (human) ]
<b>Official Symbol</b>	PENK
<b>Synonyms</b>	PENK; proenkephalin; proenkephalin-A; preproenkephalin; enkephalin A;
<b>Gene ID</b>	5179
<b>mRNA Refseq</b>	NM_001135690
<b>Protein Refseq</b>	NP_001129162
<b>MIM</b>	131330
<b>UniProt ID</b>	P01210

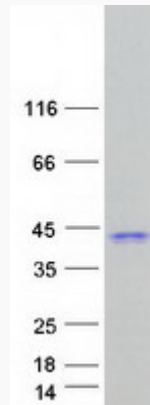
 Tel: 1-631-559-9269 1-516-512-3133

 Email: [info@creative-biomart.com](mailto:info@creative-biomart.com)  Fax: 1-631-938-8127

 45-1 Ramsey Road, Shirley, NY 11967, USA



SDS-PAGE



Tel: 1-631-559-9269 1-516-512-3133

Email: [info@creative-biomart.com](mailto:info@creative-biomart.com) Fax: 1-631-938-8127

45-1 Ramsey Road, Shirley, NY 11967, USA