

Recombinant Human PEPD Protein, His-tagged

Cat. No. PEPD-22H Lot. No. (See product label)

SPECIFICATION

Product Overview	Recombinant human PEPD (1-493aa) protein with His tag was expressed in E.coli.
Species	Human
Source	E.coli
Description	This gene encodes a member of the peptidase family. The protein forms a homodimer that hydrolyzes dipeptides or tripeptides with C-terminal proline or hydroxyproline residues. The enzyme serves an important role in the recycling of proline, and may be rate limiting for the production of collagen. Mutations in this gene result in prolidase deficiency, which is characterized by the excretion of large amount of di- and tri-peptides containing proline. Multiple transcript variants encoding different isoforms have been found for this gene.
Form	Liquid
Molecular Mass	56.9kDa
AA Sequence	<p>MGSSHHHHHHSSGLVPRGSHMGSMMAAATGPSFWLGNETLKVPLALFALNRQRLCE RLRKNPAVQAGSIVVLQGG EETQRYCTDTGV LFRQESFFHWAFGVTEPGCYGVIDV DTGKSTLFVPRLPASHATWMGKIHSKEHFKEKYAVDDVQYVDEIASVLTSQKPSVLL TLRGVNTDSGSVCREASFDGISKFEVNNILHPEIVECRVFKTDMELEVLRYTNKISS EAHREVMKAVKVG MKEYELES LFEHYCYSRGGMRHSSYTCICGSGENSAVLHYGH AGAPNDRTIQNGDMCLFDMGGEYYCFASDITCSFPANGKFTADQKAVYEAVLRSSR AVMGAMKPGVWWPDMHRLADRIHLEELAHMGILSGSVDAMVQAHLGAVFMPHGL</p>

 Tel: 1-631-559-9269 1-516-512-3133

 Email: info@creative-biomart.com  Fax: 1-631-938-8127

 45-1 Ramsey Road, Shirley, NY 11967, USA

GHFLGIDVHDVGGYPEGVERIDEPGLRSLRTARHLQPGMVLTVEPGIYFIDHLLDEAL
ADPARASFLNREVLQRFRGFGGVRIEEDVVVTDSGIELLTCVPRTVEEIEACMAGCD
KAFTPFSGPK

Purity > 90% by SDS - PAGE

Storage Can be stored at +4 centigrade short term (1-2 weeks). For long term storage, aliquot and store at -20 or -70 centigrade. Avoid repeated freezing and thawing cycles.

Concentration 0.5 mg/ml (determined by Bradford assay)

Storage Buffer In Phosphate buffered saline (pH7.4) containing 10% glycerol, 1mM DTT

GENE INFORMATION

Gene Name [PEPD](#)

Official Symbol [PEPD peptidase D \[Homo sapiens \(human\) \]](#)

Synonyms PEPD; peptidase D; PROLIDASE; xaa-Pro dipeptidase; X-Pro dipeptidase; aminoacyl-L-proline hydrolase; imidodipeptidase; proline dipeptidase; testicular tissue protein Li 138; EC 3.4.13.9

Gene ID [5184](#)

mRNA Refseq [NM_000285](#)

Protein Refseq [NP_000276](#)

MIM [613230](#)

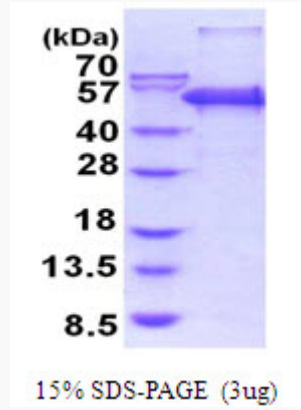
 Tel: 1-631-559-9269 1-516-512-3133

 Email: info@creative-biomart.com  Fax: 1-631-938-8127

 45-1 Ramsey Road, Shirley, NY 11967, USA

UniProt ID

P12955



 Tel: 1-631-559-9269 1-516-512-3133

 Email: info@creative-biomart.com  Fax: 1-631-938-8127

 45-1 Ramsey Road, Shirley, NY 11967, USA