

## Recombinant Human PEPD Protein, His-tagged

**Cat. No.** PEPD-30835TH    **Lot. No.** (See product label)

### SPECIFICATION

<b>Product Overview</b>	Recombinant human PEPD, fused to His-tag at N-terminus, was expressed in E.coli and purified by using conventional chromatography techniques.
<b>Species</b>	Human
<b>Source</b>	E.coli
<b>Description</b>	PEPD also known as Xaa-Pro dipeptidase isoform1. The protein forms a homodimer that hydrolyzes dipeptides or tripeptides with C-terminal proline or hydroxyproline residues. The enzyme serves an important role in the recycling of proline, and may be rate limiting for the production of collagen. Mutations in this gene result in prolidase deficiency, which is characterized by the excretion of large amount of di- and tripeptides containing proline.
<b>Form</b>	Liquid
<b>Molecular Mass</b>	56.9kDa
<b>AA Sequence</b>	<p>MGSSHHHHHHSSGLVPRGSHMGSMMAAATGPSFWLGNETLKVPLALFALNRQRLCE            RLRKNPAVQAGSIVVLQGGGEETQRYCTDTGVLFQRQESFFHWAFGVTEPGCYGVIDV            DTGKSTLFPRLPASHATWMGKIHSKEHFKEKYAVDDVQYVDEIASVLTSQKPSVLL            TLRGVNTDSGSVCREASFDGISKFEVNNILHPEIVECRVFKTDMELEVLRYTNKISS            EAHREVMKAVKVG MKEYELESLEFHYCYSRGGMRHSSYTCICGSGENSAVLHYGH            AGAPNDRTIQNGDMCLFDMGGEYYCFASDITCSFPANGKFTADQKAVYEAVLRSSR            AVMGAMKPGVWWPDMHRLADRIHLEELAHMGILSGSVDAMVQAHLGAVFMPHGL</p>

 Tel: 1-631-559-9269    1-516-512-3133

 Email: [info@creative-biomart.com](mailto:info@creative-biomart.com)     Fax: 1-631-938-8127

 45-1 Ramsey Road, Shirley, NY 11967, USA

GHFLGIDVHDVGGYPEGVERIDEPGLRSLRTARHLQPGMVLTVEPGIYFIDHLLDEAL  
ADPARASFLNREVLQRFRGFGGVRIEEDVVVTDSGIELLTCVPRTVEEIEACMAGCD  
KAFTPFSGPK

**Purity** > 90% by SDS-PAGE

**Storage** Can be stored at +4 centigrade short term (1-2 weeks). For long term storage, aliquot and store at -20 or -70 centigrade. Avoid repeated freezing and thawing cycles.

**Concentration** 0.5 mg/mL

**Storage Buffer** In Phosphate buffered saline (pH 7.4) containing 10% glycerol, 1mM DTT.

## GENE INFORMATION

**Gene Name** [PEPD peptidase D \[ Homo sapiens \(human\) \]](#)

**Official Symbol** [PEPD](#)

**Synonyms** PEPD; peptidase D; PROLIDASE; xaa-Pro dipeptidase; X-Pro dipeptidase; aminoacyl-L-proline hydrolase; imidodipeptidase; proline dipeptidase; testicular tissue protein Li 138; EC 3.4.13.9

**Gene ID** [5184](#)

**mRNA Refseq** [NM\\_000285](#)

**Protein Refseq** [NP\\_000276](#)

**MIM** [613230](#)

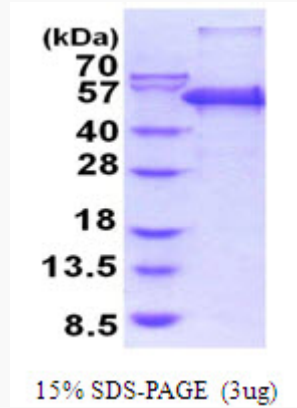
 Tel: 1-631-559-9269 1-516-512-3133

 Email: [info@creative-biomart.com](mailto:info@creative-biomart.com)  Fax: 1-631-938-8127

 45-1 Ramsey Road, Shirley, NY 11967, USA

UniProt ID

P12955



 Tel: 1-631-559-9269 1-516-512-3133

 Email: [info@creative-biomart.com](mailto:info@creative-biomart.com)  Fax: 1-631-938-8127

 45-1 Ramsey Road, Shirley, NY 11967, USA