

# Recombinant Human PEPD Protein, Myc/DDK-tagged, C13 and N15-labeled

Cat. No. PEPD-6625H Lot. No. (See product label)

## SPECIFICATION

<b>Product Overview</b>	PEPD MS Standard C13 and N15-labeled recombinant protein (NP_000276) with a C-terminal MYC/DDK tag, was expressed in HEK293 cells.
<b>Species</b>	Human
<b>Source</b>	HEK293
<b>Description</b>	This gene encodes a member of the peptidase family. The protein forms a homodimer that hydrolyzes dipeptides or tripeptides with C-terminal proline or hydroxyproline residues. The enzyme serves an important role in the recycling of proline, and may be rate limiting for the production of collagen. Mutations in this gene result in prolidase deficiency, which is characterized by the excretion of large amount of di- and tri-peptides containing proline. Multiple transcript variants encoding different isoforms have been found for this gene.
<b>Molecular Mass</b>	54.5 kDa
<b>AA Sequence</b>	MAAATGPSFWLGNETLKVPLALFALNRQLCERLRKNPAVQAGSIVVLQGGEETQR YCTDTGVLFRQESFFHWAFGVTEPGCYGVIDVDTGKSTLFPRLPASHATWMGKIH SKEHFKEKYAVDDVQYVDEIASVLT SQKPSVLLTLRGVNTDSGSVCREASFDGISKF EVNNTILHPEIVECRVFKTDMELEVLRYTNKISSEAHREVMKAVKVG MKEYELES LFE HYCYSRGGMRHSSYTCICGSGENSAVLHYGHAGAPNDRTIQNGDMCLFDMGGEY YCFASDITCSFPANGKFTADQKAVYEAVLRSSRAVMGAMKPGVWWPDMHRLADRI

 Tel: 1-631-559-9269 1-516-512-3133

 Email: [info@creative-biomart.com](mailto:info@creative-biomart.com)  Fax: 1-631-938-8127

 45-1 Ramsey Road, Shirley, NY 11967, USA



HLEELAHMGILSGSVDAMVQAHLGAVFMPHGLGHFLGIDVHDVGGYPEGVERIDEP  
GLRSLRTARHLQPGMVLTVEPGIYFIDHLLDEALADPARASFLNREVLQRFRGGV  
RIEEDVVVTDSGIELLTCVPRTVEEIEACMAGCDKAFTPFSGPKTRTRPLEQKLISEE  
DLAANDILDYKDDDDKV

**Purity** > 80% as determined by SDS-PAGE and Coomassie blue staining

**Stability** Stable for 3 months from receipt of products under proper storage and handling conditions.

**Storage** Store at -80 centigrade. Avoid repeated freeze-thaw cycles.

**Concentration** 50 µg/mL as determined by BCA

**Storage Buffer** 100 mM glycine, 25 mM Tris-HCl, pH 7.3.

## GENE INFORMATION

**Gene Name** PEPD peptidase D [ Homo sapiens (human) ]

**Official Symbol** PEPD

**Synonyms** PEPD; peptidase D; xaa-Pro dipeptidase; prolidase; imidodipeptidase; X-Pro dipeptidase; proline dipeptidase; aminoacyl-L-proline hydrolase; PROLIDASE; MGC10905;

**Gene ID** 5184

**mRNA Refseq** NM\_000285

**Protein Refseq** NP\_000276

Tel: 1-631-559-9269 1-516-512-3133

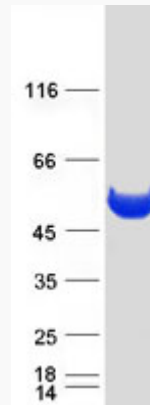
Email: [info@creative-biomart.com](mailto:info@creative-biomart.com) Fax: 1-631-938-8127

45-1 Ramsey Road, Shirley, NY 11967, USA

MIM 613230

UniProt ID P12955

SDS-PAGE



 Tel: 1-631-559-9269 1-516-512-3133

 Email: [info@creative-biomart.com](mailto:info@creative-biomart.com)  Fax: 1-631-938-8127

 45-1 Ramsey Road, Shirley, NY 11967, USA