

Recombinant Human PFDN2 Protein, Myc/DDK-tagged, C13 and N15-labeled

Cat. No. PFDN2-4181H Lot. No. (See product label)

SPECIFICATION

Product Overview	PFDN2 MS Standard C13 and N15-labeled recombinant protein (NP_036526) with a C-terminal MYC/DDK tag, was expressed in HEK293 cells.
Species	Human
Source	HEK293
Description	This gene encodes a member of the prefoldin beta subunit family. The encoded protein is one of six subunits of prefoldin, a molecular chaperone complex that binds and stabilizes newly synthesized polypeptides, thereby allowing them to fold correctly. The complex, consisting of two alpha and four beta subunits, forms a double beta barrel assembly with six protruding coiled-coils.
Molecular Mass	16.6 kDa
AA Sequence	MAENSGRAGKSSGSGAGKGAVSAAEQVIAGFNRLRQEQRGLASKAAELEMELNEHS LVIDTLKEVDETRKCYRMVGGVLVERTVKEVLPALENNKEQIQKIIETLTQQLQAKGK ELNEFREKHNIRLMGEDEKPAAKENSEGAGAKASSAGVLVSTRTRPLEQKLISEEDL AANDILDYKDDDDKV
Purity	> 80% as determined by SDS-PAGE and Coomassie blue staining
Stability	Stable for 3 months from receipt of products under proper storage and handling conditions.

 Tel: 1-631-559-9269 1-516-512-3133

 Email: info@creative-biomart.com  Fax: 1-631-938-8127

 45-1 Ramsey Road, Shirley, NY 11967, USA

Storage	Store at -80 centigrade. Avoid repeated freeze-thaw cycles.
----------------	---

Concentration	50 µg/mL as determined by BCA
----------------------	-------------------------------

Storage Buffer	100 mM glycine, 25 mM Tris-HCl, pH 7.3.
-----------------------	---

GENE INFORMATION

Gene Name	PFDN2 prefoldin subunit 2 [Homo sapiens (human)]
------------------	--

Official Symbol	PFDN2
------------------------	-------

Synonyms	PFDN2; prefoldin subunit 2; prefoldin 2; PFD2;
-----------------	--

Gene ID	5202
----------------	------

mRNA Refseq	NM_012394
--------------------	-----------

Protein Refseq	NP_036526
-----------------------	-----------

MIM	613466
------------	--------

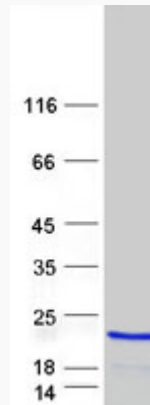
UniProt ID	Q9UHV9
-------------------	--------

 Tel: 1-631-559-9269 1-516-512-3133

 Email: info@creative-biomart.com  Fax: 1-631-938-8127

 45-1 Ramsey Road, Shirley, NY 11967, USA

SDS-PAGE



 Tel: 1-631-559-9269 1-516-512-3133

 Email: info@creative-biomart.com  Fax: 1-631-938-8127

 45-1 Ramsey Road, Shirley, NY 11967, USA