

## Recombinant Human PFN1 protein, His-tagged

Cat. No. PFN1-90H Lot. No. (See product label)

### SPECIFICATION

<b>Product Overview</b>	Recombinant Human PFN1 protein, fused to His-tag, was expressed in E. coli.
<b>Species</b>	Human
<b>Source</b>	E.coli
<b>Description</b>	This gene encodes a member of the profilin family of small actin-binding proteins. The encoded protein plays an important role in actin dynamics by regulating actin polymerization in response to extracellular signals. Deletion of this gene is associated with Miller-Dieker syndrome, and the encoded protein may also play a role in Huntington disease. Multiple pseudogenes of this gene are located on chromosome 1.
<b>Form</b>	Supplied as a 0.2 µm filtered solution in 30mM Tris, 300 mM NaCl, pH9.0.
<b>Molecular Mass</b>	~16.1 kDa
<b>AA Sequence</b>	MAGWNAYIDNLMADGTCQDAAIVGYKDSPSVWAAVPGKTFVNITPAEVGVLVGKDR SSFYVNGLTGGQKGSVIRDSLLQDGEFSMDLRTKSTGGAPTFNVTVTKTDKTLVLL MGKEGVHGGLINKKCYEMASHLRRSQYLEHHHHHHH
<b>Purity</b>	>90%
<b>Storage</b>	Store it under sterile conditions at -20 to -80 centigrade. It is recommended that the protein be aliquoted for optimal storage. Avoid repeated freeze-thaw cycles.

 Tel: 1-631-559-9269 1-516-512-3133

 Email: [info@creative-biomart.com](mailto:info@creative-biomart.com)  Fax: 1-631-938-8127

 45-1 Ramsey Road, Shirley, NY 11967, USA



**Concentration** 0.28 mg/mL

## GENE INFORMATION

**Gene Name** PFN1 profilin 1 [ Homo sapiens (human) ]

**Official Symbol** PFN1

**Synonyms** ALS18

**Gene ID** 5216

**mRNA Refseq** NM\_001375991

**Protein Refseq** NP\_001362920

**MIM** 176610

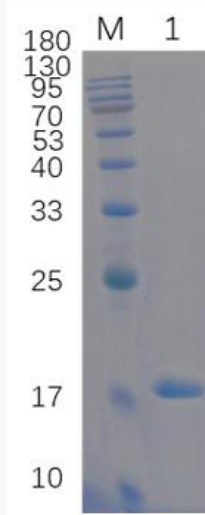
**UniProt ID** P07737

 Tel: 1-631-559-9269 1-516-512-3133

 Email: [info@creative-biomart.com](mailto:info@creative-biomart.com)  Fax: 1-631-938-8127

 45-1 Ramsey Road, Shirley, NY 11967, USA

**SDS-PAGE**



12% reducing SDS-PAGE analysis of purified PFN1-C71G (approximately 1 mg protein loaded).

 Tel: 1-631-559-9269 1-516-512-3133

 Email: [info@creative-biomart.com](mailto:info@creative-biomart.com)  Fax: 1-631-938-8127

 45-1 Ramsey Road, Shirley, NY 11967, USA