

Recombinant Human PGC Protein

Cat. No. PGC-0041H Lot. No. (See product label)

SPECIFICATION

Product Overview	Recombinant Human PGC Protein without tag was expressed in HEK293.
Species	Human
Source	HEK293
Description	<p>This gene encodes an aspartic proteinase that belongs to the peptidase family A1. The encoded protein is a digestive enzyme that is produced in the stomach and constitutes a major component of the gastric mucosa. This protein is also secreted into the serum. This protein is synthesized as an inactive zymogen that includes a highly basic prosegment. This enzyme is converted into its active mature form at low pH by sequential cleavage of the prosegment that is carried out by the enzyme itself. Polymorphisms in this gene are associated with susceptibility to gastric cancers. Serum levels of this enzyme are used as a biomarker for certain gastric diseases including Helicobacter pylori related gastritis. Alternate splicing results in multiple transcript variants. A pseudogene of this gene is found on chromosome 1.</p>
Applications	ELISA, CLIA, CG
Notes	For research use only, not for use in diagnostic procedure.
Storage	Short term (up to 7 days) store at 2–8 centigrade. Long term, store at - 20 centigrade. Avoid multiple freeze/thaw cycles.
Storage Buffer	Supplied as a 0.2 µm filtered solution of PBS, pH7.4

 Tel: 1-631-559-9269 1-516-512-3133

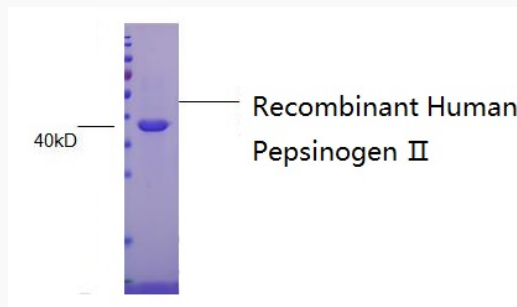
 Email: info@creative-biomart.com  Fax: 1-631-938-8127

 45-1 Ramsey Road, Shirley, NY 11967, USA

GENE INFORMATION

Gene Name	PGC progastricsin (pepsinogen C) [Homo sapiens (human)]
Official Symbol	PGC
Synonyms	PGC; progastricsin (pepsinogen C); gastricsin; pepsin C; pepsinogen C; preprogastricsin; pepsinogen group II; PEPC; PGII; FLJ99563;
Gene ID	5225
mRNA Refseq	NM_001166424
Protein Refseq	NP_001159896
MIM	169740
UniProt ID	P20142

SDS-PAGE



Tel: 1-631-559-9269 1-516-512-3133

Email: info@creative-biomart.com Fax: 1-631-938-8127

45-1 Ramsey Road, Shirley, NY 11967, USA