

Recombinant Human PGC protein, His-tagged

Cat. No. PGC-1663H Lot. No. (See product label)

SPECIFICATION

Product Overview	Recombinant Human PGC protein(1-388 aa), fused with N-terminal His tag, was expressed in E. coli.
Species	Human
Source	E. coli
ProteinLength	1-388 aa
Form	The purified protein was lyophilized from sterile phosphate-buffered saline (PBS: 58 mM Na ₂ HPO ₄ , 17 mM NaH ₂ PO ₄ , 68 mM NaCl, pH 7.4). Prior to lyophilization, 5% (w/v) trehalose and 5% (w/v) mannitol were incorporated as cryoprotective excipients. The protein was eluted with a buffer containing 300 mM imidazole.
AASequence	MKWMVVVLVCLQLLEAAVVKVPLKKFKSIRETMKEKGLLGEFLRTHKYDPAWKYRF GDLSVTYEPMAYMDAAYFGEISIGTPPQNFLVLFDTGSSNLWVPSVYCQSQACTSH SRFNPSESSTYSTNGQTFSLQYGSGLTGFFGYDTLTVQSIQVNPQEFGLSENEPG TNFVYAQFDGIMGLAYPALSVDEATTAMQGMVQEGALTSPVFSVYLSNQQGSSGG AVVFGGVDSSTLYTGQIYWAPVTQELYWQIGIEEFLIGGQASGWCSEGCQAIVDTGTS LLTVPQQYMSALLQATGAQEDEYGGQFLVNCNSIQNLPSLTFIINGVEFPLPPSSYILSN NGYCTVGVEPTYLSSQNGQPLWILGDVFLRSYYSVYDLGNNRVGFATAA
Purity	85%, by SDS-PAGE.
Storage	Store at 2-8°C for 1-2 weeks. Aliquot and store at -20°C to -80°C for up to 3 months,

 Tel: 1-631-559-9269 1-516-512-3133

 Email: info@creative-biomart.com  Fax: 1-631-938-8127

 45-1 Ramsey Road, Shirley, NY 11967, USA

reconstitution with sterile water and addition of an equal volume of glycerol. Avoid repeat freeze-thaw cycles.

Reconstitution

It is recommended that sterile water be added to the vial to prepare a stock solution of 0.25 ug/ul. Centrifuge the vial at 4°C before opening to recover the entire contents.

GENE INFORMATION

Gene Name PGC progastricsin (pepsinogen C) [Homo sapiens]

Official Symbol PGC

Synonyms PGC; progastricsin (pepsinogen C); gastricsin; pepsin C; pepsinogen C; preprogastricsin; pepsinogen group II; PEPC; PGII; FLJ99563;

mRNA Refseq NM_001166424

Protein Refseq NP_001159896

MIM 169740

UniProt ID P20142

Gene ID 5225

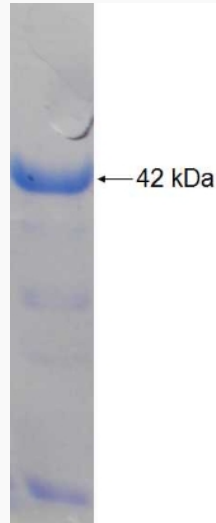
 Tel: 1-631-559-9269 1-516-512-3133

 Email: info@creative-biomart.com  Fax: 1-631-938-8127

 45-1 Ramsey Road, Shirley, NY 11967, USA



SDS-PAGE



☎ Tel: 1-631-559-9269 1-516-512-3133

☎ Email: info@creative-biomart.com ☎ Fax: 1-631-938-8127

☎ 45-1 Ramsey Road, Shirley, NY 11967, USA