

Recombinant Human PGC Protein, Myc/DDK-tagged, C13 and N15-labeled

Cat. No. PGC-2342H **Lot. No.** (See product label)

SPECIFICATION

Product Overview	PGC MS Standard C13 and N15-labeled recombinant protein (NP_002621) with a C-terminal MYC/DDK tag, was expressed in HEK293 cells.
Species	Human
Source	HEK293
Description	<p>This gene encodes an aspartic proteinase that belongs to the peptidase family A1. The encoded protein is a digestive enzyme that is produced in the stomach and constitutes a major component of the gastric mucosa. This protein is also secreted into the serum. This protein is synthesized as an inactive zymogen that includes a highly basic prosegment. This enzyme is converted into its active mature form at low pH by sequential cleavage of the prosegment that is carried out by the enzyme itself. Polymorphisms in this gene are associated with susceptibility to gastric cancers. Serum levels of this enzyme are used as a biomarker for certain gastric diseases including Helicobacter pylori related gastritis. Alternate splicing results in multiple transcript variants. A pseudogene of this gene is found on chromosome 1.</p>
Molecular Mass	42.4 kDa
AA Sequence	<p>MKWMVVVLVCLQLLEAAVVKVPLKKFKSIRETMKEKLLGEFLRTHKYDPAWKYRF GDLSVTYEPMAYMDAAYFGEISIGTPPQNFLVLFDTGSSNLWVPSVYCQSQACTSH SRFNPSESSTYSTNGQTFSLQYGSGLTGFFGYDTLTVQSIQVNPQEFGLSENEPG</p>

 Tel: 1-631-559-9269 1-516-512-3133

 Email: info@creative-biomart.com  Fax: 1-631-938-8127

 45-1 Ramsey Road, Shirley, NY 11967, USA

TNFVYAQFDGIMGLAYPALSVDEATTAMQGMVQEGALTSPVFSVYLSNQQGSSGG
 AVVFGGVDSPLYTGQIYWAPVTQELYWQIGIEEFLIGGQASGWCSEGCQAIVDTGTS
 LLTVPQQYMSALLQATGAQEDEYGGQFLVNCNSIQNLPSLTFIINGVEFPLPPSSYILSN
 NGYCTVGVEPTYLSSQNGQPLWILGDVFLRSYYSVYDLGNNRVGFATAATRTRPLE
 QKLISEEDLAANDILDYKDDDDKV

Purity > 80% as determined by SDS-PAGE and Coomassie blue staining

Stability Stable for 3 months from receipt of products under proper storage and handling conditions.

Storage Store at -80 centigrade. Avoid repeated freeze-thaw cycles.

Concentration 50 µg/mL as determined by BCA

Storage Buffer 100 mM glycine, 25 mM Tris-HCl, pH 7.3.

GENE INFORMATION

Gene Name PGC progastricsin [*Homo sapiens* (human)]

Official Symbol PGC

Synonyms PGC; progastricsin (pepsinogen C); gastricsin; pepsin C; pepsinogen C; preprogastricsin; pepsinogen group II; PEPC; PGII; FLJ99563;

Gene ID 5225

mRNA Refseq NM_002630

Protein Refseq NP_002621

 Tel: 1-631-559-9269 1-516-512-3133

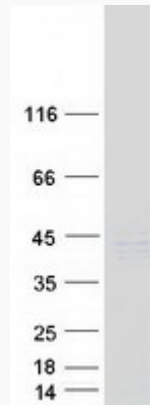
 Email: info@creative-biomart.com  Fax: 1-631-938-8127

 45-1 Ramsey Road, Shirley, NY 11967, USA

MIM 169740

UniProt ID P20142

SDS-PAGE



 Tel: 1-631-559-9269 1-516-512-3133

 Email: info@creative-biomart.com  Fax: 1-631-938-8127

 45-1 Ramsey Road, Shirley, NY 11967, USA