

## Recombinant Human PGF Protein, His-tagged

Cat. No. PGF-04H Lot. No. (See product label)

### SPECIFICATION

<b>Product Overview</b>	Recombinant human PIGF (21-170aa), fused to His-tag at C-terminus, was expressed in HEK293 and purified by using conventional chromatography techniques.
<b>Species</b>	Human
<b>Source</b>	HEK293
<b>ProteinLength</b>	21-170aa
<b>Description</b>	This gene encodes a growth factor found in placenta which is homologous to vascular endothelial growth factor. Alternatively spliced transcripts encoding different isoforms have been found for this gene.
<b>Form</b>	Liquid
<b>Molecular Mass</b>	18.3kDa (160aa)
<b>AA Sequence</b>	AVPPQQWALSAGNGSSEVEVVPFQEVWGRSYCRALERLVDVVSEYPSEVEHMFSP SCVSLLRCTGCCGDENLHCVPVETANVTMQLLKIRSGDRPSYVELTFSQHVRCER PLREKMKPERRRPKGRGKRRREKQRPTDCHLCGDAVPRR
<b>Endotoxin</b>	< 1 EU/μg of protein (determined by LAL method)
<b>Purity</b>	> 95% by SDS-PAGE

 Tel: 1-631-559-9269 1-516-512-3133

 Email: [info@creative-biomart.com](mailto:info@creative-biomart.com)  Fax: 1-631-938-8127

 45-1 Ramsey Road, Shirley, NY 11967, USA

<b>Applications</b>	SDS-PAGE
<b>Storage</b>	Can be stored at +2 to +8 centigrade for 1 week. For long term storage, aliquot and store at -20 to -80 centigrade. Avoid repeated freezing and thawing cycles.
<b>Concentration</b>	0.25 mg/mL (determined by Absorbance at 280nm)
<b>Storage Buffer</b>	Phosphate-Buffered Saline (pH 7.4) containing 10% glycerol

## GENE INFORMATION

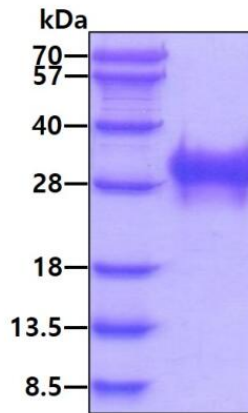
<b>Gene Name</b>	PGF placental growth factor [ Homo sapiens (human) ]
<b>Official Symbol</b>	PGF
<b>Synonyms</b>	PGF; placental growth factor; PGFL; PIGF; PLGF; PIGF-2; D12S1900; SHGC-10760; placenta growth factor; placental growth factor, vascular endothelial growth factor-related protein
<b>Gene ID</b>	5228
<b>mRNA Refseq</b>	NM_002632
<b>Protein Refseq</b>	NP_002623
<b>MIM</b>	601121
<b>UniProt ID</b>	P49763

 Tel: 1-631-559-9269 1-516-512-3133

 Email: [info@creative-biomart.com](mailto:info@creative-biomart.com)  Fax: 1-631-938-8127

 45-1 Ramsey Road, Shirley, NY 11967, USA

**SDS-PAGE**



3 $\mu$ g by SDS-PAGE under reducing condition and visualized by coomassie blue stain

 Tel: 1-631-559-9269 1-516-512-3133

 Email: [info@creative-biomart.com](mailto:info@creative-biomart.com)  Fax: 1-631-938-8127

 45-1 Ramsey Road, Shirley, NY 11967, USA