

## Active Recombinant Human PGF Protein, His tagged

Cat. No. PGF-21HFL Lot. No. (See product label)

### SPECIFICATION

<b>Product Overview</b>	Recombinant human PIGF-1/PGF, fused to His-tag at C-terminus, was expressed in HEK293 cell and purified by using conventional chromatography techniques.
<b>Species</b>	Human
<b>Source</b>	HEK293
<b>ProteinLength</b>	19-149 aa
<b>Description</b>	Enables growth factor activity. Involved in positive regulation of cell population proliferation. Predicted to be located in extracellular region. Predicted to be active in extracellular space. Implicated in several diseases, including brain ischemia; diabetic neuropathy; glioblastoma; myocardial infarction; and pancreatic endocrine carcinoma. Biomarker of several diseases, including artery disease (multiple); autoimmune disease of musculoskeletal system (multiple); epilepsy (multiple); limited scleroderma; and pancreatic endocrine carcinoma.
<b>Form</b>	Liquid
<b>AASequence</b>	LPAVPPQQWALSAGNGSSEVEVVPFQEVWGRSYCRALERLVDVVSEYPSEVEHMF SPSCVLLRCTGCCGDENLHCVPVETANVTMQLLKIRSGDRPSYVELTFSQHVRC CRPLREKMKPERCGDAVPRR
<b>Molecular Mass</b>	15.5 kDa (137aa)

 Tel: 1-631-559-9269 1-516-512-3133

 Email: [info@creative-biomart.com](mailto:info@creative-biomart.com)  Fax: 1-631-938-8127

 45-1 Ramsey Road, Shirley, NY 11967, USA

<b>Bio-activity</b>	Measured by its binding ability in a functional ELISA with Human VEGFR1/Flt-1.
<b>Endotoxin</b>	< 1 EU/μg of protein (determined by LAL method)
<b>Purity</b>	> 90% by SDS-PAGE
<b>Application</b>	SDS-PAGE, Bioactivity
<b>Storage</b>	Can be stored at +2 to +8 centigrade for 1 week. For long term storage, aliquot and store at -20 to -80 centigrade. Avoid repeated freezing and thawing cycles.
<b>Storage Buffer</b>	Phosphate-Buffered Saline (pH 7.4) containing 10% glycerol
<b>Concentration</b>	0.5 mg/mL (determined by Bradford assay)
<b>Reference</b>	1. Hauser, S. and H.A. Weich (1993) Growth Factors. 9:259-268. 2. Maglione, D., et al, (1993) Oncogene. 8:925-931. 3. Roncal, C., et al, (2010) Cardiovasc. Res. 86:29-36.

## GENE INFORMATION

<b>Gene Name</b>	PGF placental growth factor [ Homo sapiens (human) ]
<b>Official Symbol</b>	PGF
<b>Synonyms</b>	PGF; placental growth factor; PGFL; PIGF; PLGF; PIGF-2; D12S1900; SHGC-10760; placenta growth factor; placental growth factor, vascular endothelial growth factor-related protein
<b>Gene ID</b>	5228

 Tel: 1-631-559-9269 1-516-512-3133

 Email: [info@creative-biomart.com](mailto:info@creative-biomart.com)  Fax: 1-631-938-8127

 45-1 Ramsey Road, Shirley, NY 11967, USA

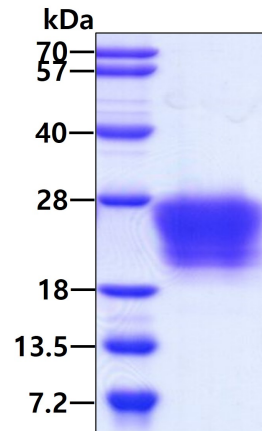
mRNA Refseq [NM\\_001207012](#)

Protein Refseq [NP\\_001193941](#)

MIM [601121](#)

UniProt ID [P49763](#)

SDS-PAGE and WB



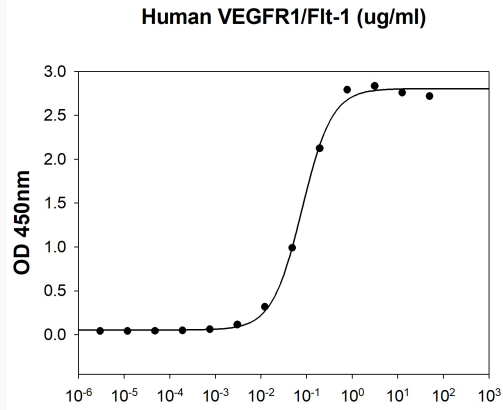
 Tel: 1-631-559-9269 1-516-512-3133

 Email: [info@creative-biomart.com](mailto:info@creative-biomart.com)  Fax: 1-631-938-8127

 45-1 Ramsey Road, Shirley, NY 11967, USA



**Biological Activity**



Tel: 1-631-559-9269 1-516-512-3133

Email: [info@creative-biomart.com](mailto:info@creative-biomart.com) Fax: 1-631-938-8127

45-1 Ramsey Road, Shirley, NY 11967, USA