

Recombinant Human PGF protein, hFc-tagged

Cat. No. PGF-4635H **Lot. No.** (See product label)

SPECIFICATION

Product Overview	Recombinant Human PGF protein(P49763)(19-170aa), fused with C-terminal hFc tag, was expressed in HEK293.
Species	Human
Source	HEK293
ProteinLength	19-170aa
Tag	C-hFc
Form	If the delivery form is liquid, the default storage buffer is Tris/PBS-based buffer, 5%-50% glycerol. If the delivery form is lyophilized powder, the buffer before lyophilization is Tris/PBS-based buffer, 6% Trehalose, pH 8.0.
Molecular Mass	45.1 kDa
Purity	Greater than 85% as determined by SDS-PAGE.
Storage	Store at -20°C/-80°C upon receipt, aliquoting is necessary for mutiple use. Avoid repeated freeze-thaw cycles.
Reconstitution	We recommend that this vial be briefly centrifuged prior to opening to bring the contents to the bottom. Please reconstitute protein in deionized sterile water to a concentration of 0.1-1.0 mg/mL. We recommend to add 5-50% of glycerol (final

 Tel: 1-631-559-9269 1-516-512-3133

 Email: info@creative-biomart.com  Fax: 1-631-938-8127

 45-1 Ramsey Road, Shirley, NY 11967, USA

concentration) and aliquot for long-term storage at -20°C/-80°C.

AA Sequence

LPAVPPQQWALSAGNGSSEVEVVPFQEVWGRSYCRALERLVDVVSEYPSEVEHMF
 SPSCVSLLRCTGCCGDENLHCVPVETANVTMQLLKIRSGDRPSYVELTFSQHVRC
 CRPLREKMKPERRRPKGRGKRRREKQRPTDCHLCGDAVPRR

GENE INFORMATION

Gene Name

PGF placental growth factor [Homo sapiens]

Official Symbol

PGF

Synonyms

PGF; placental growth factor; PGFL, placental growth factor, vascular endothelial growth factor related protein , placental growth factor like; placenta growth factor; D12S1900; PIGF; PLGF; PIGF 2; SHGC 10760; placental growth factor-like; placental growth factor, vascular endothelial growth factor-related protein; PGFL; PIGF-2; SHGC-10760;

Gene ID

5228

mRNA Refseq

NM_001207012

Protein Refseq

NP_001193941

MIM

601121

UniProt ID

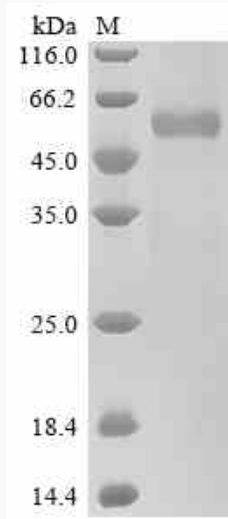
P49763

 Tel: 1-631-559-9269 1-516-512-3133

 Email: info@creative-biomart.com  Fax: 1-631-938-8127

 45-1 Ramsey Road, Shirley, NY 11967, USA

SDS-PAGE



 Tel: 1-631-559-9269 1-516-512-3133

 Email: info@creative-biomart.com  Fax: 1-631-938-8127

 45-1 Ramsey Road, Shirley, NY 11967, USA