

## Recombinant Human PGF protein, His-tagged

Cat. No. PGF-764H Lot. No. (See product label)

### SPECIFICATION

<b>Product Overview</b>	Recombinant Human PGF aa. (Phe43~Leu162) fused with N-terminal His tag was produced in E. coli cells.
<b>Species</b>	Human
<b>Source</b>	E.coli
<b>ProteinLength</b>	Phe43~Leu162
<b>Form</b>	Freeze-dried powder
<b>Molecular Mass</b>	18kDa as determined by SDS-PAGE reducing conditions
<b>Endotoxin</b>	<1.0EU per 1g (determined by the LAL method)
<b>Purity</b>	>98%
<b>Characteristic</b>	The isoelectric point is 6.8.
<b>Applications</b>	SDS-PAGE; WB; ELISA; IP; CoIP; Purification; Amine Reactive Labeling.
<b>Stability</b>	The thermal stability is described by the loss rate. The loss rate was determined by accelerated thermal degradation test, that is, incubate the protein at 37°C for 48h, and no obvious degradation and precipitation were observed. The loss rate is less than 5% within the expiration date under appropriate storage condition.

 Tel: 1-631-559-9269 1-516-512-3133

 Email: [info@creative-biomart.com](mailto:info@creative-biomart.com)  Fax: 1-631-938-8127

 45-1 Ramsey Road, Shirley, NY 11967, USA

<b>Storage</b>	Avoid repeated freeze/thaw cycles. Store at 2-8°C for one month. Aliquot and store at -80°C for 12 months.
<b>Concentration</b>	200µg/mL
<b>Storage buffer</b>	PBS, pH7.4, containing 1mM DTT, 5% trehalose, 0.01% sarcosyl and Proclin300.
<b>Reconstitution</b>	Reconstitute in PBS (pH7.4) to a concentration of 0.1-1.0 mg/mL. Do not vortex.

## GENE INFORMATION

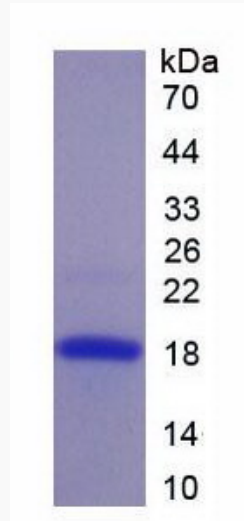
<b>Gene Name</b>	PGF placental growth factor [ Homo sapiens (human) ]
<b>Official Symbol</b>	PGF
<b>Synonyms</b>	PGFL; PIGF; PLGF; PIGF-2; D12S1900; SHGC-10760; placental growth factor, vascular endothelial growth factor-related protein; placenta growth factor
<b>Gene ID</b>	5228
<b>mRNA Refseq</b>	NM_001207012.1
<b>Protein Refseq</b>	NP_001193941.1
<b>UniProt ID</b>	P49763

 Tel: 1-631-559-9269 1-516-512-3133

 Email: [info@creative-biomart.com](mailto:info@creative-biomart.com)  Fax: 1-631-938-8127

 45-1 Ramsey Road, Shirley, NY 11967, USA

SDS-PAGE



 Tel: 1-631-559-9269 1-516-512-3133

 Email: [info@creative-biomart.com](mailto:info@creative-biomart.com)  Fax: 1-631-938-8127

 45-1 Ramsey Road, Shirley, NY 11967, USA