

Recombinant Human PGF protein, hFc-tagged

Cat. No. PGF-771H Lot. No. (See product label)

SPECIFICATION

Product Overview	Recombinant Human PGF protein(P49763-1)(Leu19-Arg221), fused with C-terminal hFc tag, was expressed in HEK293.
Species	Human
Source	HEK293
ProteinLength	Leu19-Arg221
Tag	C-hFc
Form	Supplied as 0.22µm filtered solution in PBS (pH 7.4).
Bio-activity	Immobilized Human PGF, hFc Tag at 1ug/ml (100ul/Well) on the plate. Dose response curve for Biotinylated Anti-PGF Antibody, hFc Tag with the EC50 of 34.1ng/ml determined by ELISA (QC Test).
Molecular Mass	The protein has a predicted MW of 48.6 kDa. Due to glycosylation, the protein migrates to 60-70 kDa based on Tris-Bis PAGE result.
Endotoxin	Less than 1EU per µg by the LAL method.
Purity	> 95% as determined by Tris-Bis PAGE;> 95% as determined by HPLC
Storage	Valid for 12 months from date of receipt when stored at -80°C. Recommend to aliquot

 Tel: 1-631-559-9269 1-516-512-3133

 Email: info@creative-biomart.com  Fax: 1-631-938-8127

 45-1 Ramsey Road, Shirley, NY 11967, USA

the protein into smaller quantities for optimal storage. Please do not repeated freeze-thaw cycles.

Reconstitution

It is recommended that sterile water be added to the vial to prepare a stock solution of 0.2 ug/ul. Centrifuge the vial at 4°C before opening to recover the entire contents.

GENE INFORMATION

Gene Name [PGF placental growth factor \[Homo sapiens \]](#)

Official Symbol [PGF](#)

Synonyms

PGF; placental growth factor; PGFL, placental growth factor, vascular endothelial growth factor related protein , placental growth factor like; placenta growth factor; D12S1900; PIGF; PLGF; PIGF 2; SHGC 10760; placental growth factor-like; placental growth factor, vascular endothelial growth factor-related protein; PGFL; PIGF-2; SHGC-10760;

Gene ID [5228](#)

mRNA Refseq [NM_001207012](#)

Protein Refseq [NP_001193941](#)

MIM [601121](#)

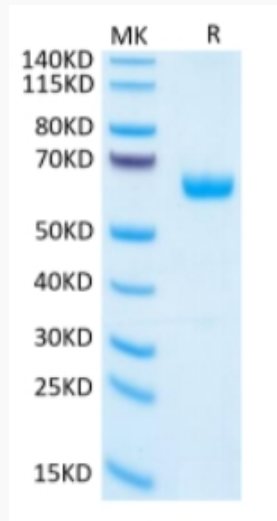
UniProt ID [P49763](#)

 Tel: 1-631-559-9269 1-516-512-3133

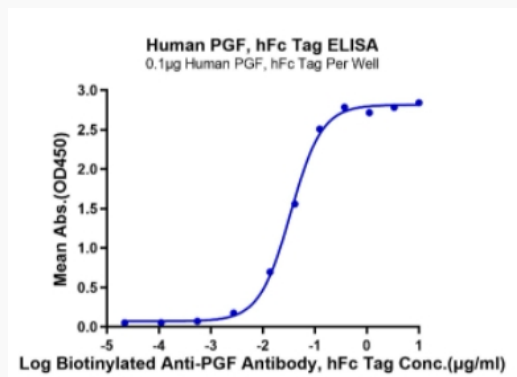
 Email: info@creative-biomart.com  Fax: 1-631-938-8127

 45-1 Ramsey Road, Shirley, NY 11967, USA

Tris-Bis PAGE



ELISA Data



 Tel: 1-631-559-9269 1-516-512-3133

 Email: info@creative-biomart.com  Fax: 1-631-938-8127

 45-1 Ramsey Road, Shirley, NY 11967, USA