

Recombinant Human PGP Protein, Myc/DDK-tagged, C13 and N15-labeled

Cat. No. PGP-5630H **Lot. No.** (See product label)

SPECIFICATION

Product Overview	PGP MS Standard C13 and N15-labeled recombinant protein (NP_001035830) with a C-terminal MYC/DDK tag, was expressed in HEK293 cells.
Species	Human
Source	HEK293
Description	PGP (Phosphoglycolate Phosphatase) is a Protein Coding gene. Diseases associated with PGP include Sennetsu Fever. Among its related pathways are Glyoxylate and dicarboxylate metabolism and Metabolism. Gene Ontology (GO) annotations related to this gene include magnesium ion binding and protein tyrosine phosphatase activity. An important paralog of this gene is PDXP.
Molecular Mass	33.8 kDa
AA Sequence	MAAAEAGGDDARCVRLSAERAQALLADVDTLLFDCDGVLRGETAVPGAPEALRALRARGKRLGFITNNSKTRAAYAELRRLGFGGPAGPGASLEVFGTAYCTALYLRQRLAGAPAPKAYVLGSPALAAELEAVGVASVGVGPEPLQGEGPGDWLHAPLEPDVRAVVVGFDPHFSYMKLTKALRYLQQPGCLLVGTNMDNRLPLENGRFIAGTGCLVRAVEMAAQRQADIIGKPSRFIFDCVSQEYGINPERTVMVGDRLDLDILLGATCGLKTILTTLTGVSTLGDVKNNQESDCVSKKKMVPDFYVDSIADLLPALQGTRTRPLEQKLISEEDLAANDILDYKDDDDKV
Purity	> 80% as determined by SDS-PAGE and Coomassie blue staining

 Tel: 1-631-559-9269 1-516-512-3133

 Email: info@creative-biomart.com  Fax: 1-631-938-8127

 45-1 Ramsey Road, Shirley, NY 11967, USA

Stability	Stable for 3 months from receipt of products under proper storage and handling conditions.
Storage	Store at -80 centigrade. Avoid repeated freeze-thaw cycles.
Concentration	50 µg/mL as determined by BCA
Storage Buffer	100 mM glycine, 25 mM Tris-HCl, pH 7.3.

GENE INFORMATION

Gene Name	PGP phosphoglycolate phosphatase [Homo sapiens (human)]
Official Symbol	PGP
Synonyms	PGP; phosphoglycolate phosphatase; PGPase; MGC4692;
Gene ID	283871
mRNA Refseq	NM_001042371
Protein Refseq	NP_001035830
MIM	172280
UniProt ID	A6NDG6

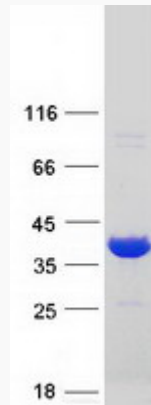
 Tel: 1-631-559-9269 1-516-512-3133

 Email: info@creative-biomart.com  Fax: 1-631-938-8127

 45-1 Ramsey Road, Shirley, NY 11967, USA



SDS-PAGE



Tel: 1-631-559-9269 1-516-512-3133

Email: info@creative-biomart.com Fax: 1-631-938-8127

45-1 Ramsey Road, Shirley, NY 11967, USA