

Recombinant Human PGPEP1 Protein, Myc/DDK-tagged, C13 and N15-labeled

Cat. No. PGPEP1-6070H **Lot. No.** (See product label)

SPECIFICATION

Product Overview	PGPEP1 MS Standard C13 and N15-labeled recombinant protein (NP_060182) with a C-terminal MYC/DDK tag, was expressed in HEK293 cells.
Species	Human
Source	HEK293
Description	The gene encodes a cysteine protease and member of the peptidase C15 family of proteins. The encoded protein cleaves amino terminal pyroglutamate residues from protein substrates including thyrotropin-releasing hormone and other neuropeptides. Expression of this gene may be downregulated in colorectal cancer, while activity of the encoded protein may be negatively correlated with cancer progression in colorectal cancer patients. Activity of the encoded protease may also be altered in other disease states including in liver cirrhosis, which is associated with reduced protease activity, and in necrozoospermia, which is associated with elevated protease activity.
Molecular Mass	23 kDa
AA Sequence	MEQPRKAVVVTGFGPFGHEHTVNASWIAVQELEKLGSDVDLHVYEIPVEYQTVQR LIPALWEKHSPQLVVHVGVS GMATTVTLEKCGHNKGYKGLDNCRFCPGSQCCVED GPESIDSIIDMDAVCKRVTTLGLDVSVTISQDAGRYLCDFTYYTSLYQSHGRSAFVHV PPLGKPYNADQLGRALRAIIEEMLDLLEQSEGKINYCHKHTRTRPLEQKLISEEDLAA

 Tel: 1-631-559-9269 1-516-512-3133

 Email: info@creative-biomart.com  Fax: 1-631-938-8127

 45-1 Ramsey Road, Shirley, NY 11967, USA

NDILDYKDDDDKV

Purity > 80% as determined by SDS-PAGE and Coomassie blue staining

Stability Stable for 3 months from receipt of products under proper storage and handling conditions.

Storage Store at -80 centigrade. Avoid repeated freeze-thaw cycles.

Concentration 50 µg/mL as determined by BCA

Storage Buffer 100 mM glycine, 25 mM Tris-HCl, pH 7.3.

GENE INFORMATION

Gene Name [PGPEP1 pyroglutamyl-peptidase I \[Homo sapiens \(human\) \]](#)

Official Symbol [PGPEP1](#)

Synonyms PGPEP1; pyroglutamyl-peptidase I; Pcp; PGP; PGP I; PGPI; PGP-I;

Gene ID [54858](#)

mRNA Refseq [NM_017712](#)

Protein Refseq [NP_060182](#)

MIM [610694](#)

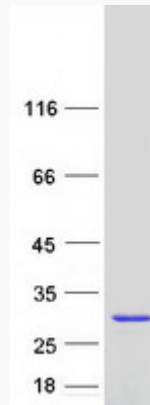
UniProt ID [Q9NXJ5](#)

 Tel: 1-631-559-9269 1-516-512-3133

 Email: info@creative-biomart.com  Fax: 1-631-938-8127

 45-1 Ramsey Road, Shirley, NY 11967, USA

SDS-PAGE



 Tel: 1-631-559-9269 1-516-512-3133

 Email: info@creative-biomart.com  Fax: 1-631-938-8127

 45-1 Ramsey Road, Shirley, NY 11967, USA