

Recombinant Human Progesterone Receptor

Cat. No. PGR-182H **Lot. No.** (See product label)

SPECIFICATION

Product Overview	Recombinant Human progesterone receptor protein expressed in <i>E.coli</i> encodes 412-562 amino acids and has a molecular mass of 43 kDa.
Species	Human
Source	E.coli
Protein Length	412-562 a.a.
Description	The progesterone receptor (PgR) is an estrogen-regulated protein. It has been proposed that expression of PgR determination indicates a responsive estrogen receptor (ER) pathway, and therefore, may predict likely response to endocrine therapy in human breast cancer. A number of studies have shown that PgR determination provides supplementary information to ER, both in predicting response to endocrine therapy and estimating survival. PgR has proved superior to ER as a prognostic indicator in some studies.
Formulation	Recombinant Human PGR at 100g/ml in 50mM Tris-Acetate, pH7.5, 1mM EDTA and 20% Glycerol.
Application And Suggested Dilutions	•ELISA •Inhibition Assays •Western Blotting.
Characterization	On SDS-PAGE commassie blue stained gel, the purified recombinant protein shows a band at 43 kDa.

 Tel: 1-631-559-9269 1-516-512-3133

 Email: info@creative-biomart.com  Fax: 1-631-938-8127

 45-1 Ramsey Road, Shirley, NY 11967, USA

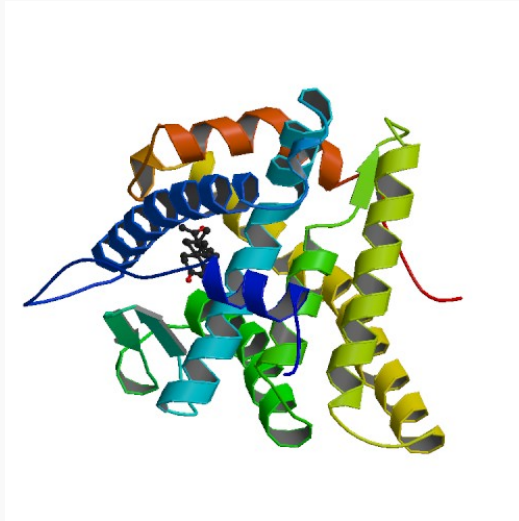
Activity	Not known.
Storage & Stability	Store vial at -20°C to -80°C. When stored at the recommended temperature, this protein is stable for 12 months.
GENE INFORMATION	
Gene Name	PGR progesterone receptor [Homo sapiens]
Synonyms	PGR; progesterone receptor; PR; NR3C3; Nuclear receptor subfamily 3 group C member 3
Gene ID	5241
mRNA Refseq	NM_000926
Protein Refseq	NP_000917
MIM	607311
UniProt ID	P06401
Chromosome Location	11q22-q23
Function	metal ion binding; protein N-terminus binding; sequence-specific DNA binding; steroid binding; steroid hormone receptor activity; transcription factor activity; zinc ion binding

 Tel: 1-631-559-9269 1-516-512-3133

 Email: info@creative-biomart.com  Fax: 1-631-938-8127

 45-1 Ramsey Road, Shirley, NY 11967, USA

PDB rendering based
on 1a28.



 Tel: 1-631-559-9269 1-516-512-3133

 Email: info@creative-biomart.com  Fax: 1-631-938-8127

 45-1 Ramsey Road, Shirley, NY 11967, USA