

Recombinant Human PGRMC2 Protein, Myc/DDK-tagged, C13 and N15-labeled

Cat. No. PGRMC2-5883H **Lot. No.** (See product label)

SPECIFICATION

Product Overview	PGRMC2 MS Standard C13 and N15-labeled recombinant protein (NP_006311) with a C-terminal MYC/DDK tag, was expressed in HEK293 cells.
Species	Human
Source	HEK293
Description	PGRMC2 (Progesterone Receptor Membrane Component 2) is a Protein Coding gene. Diseases associated with PGRMC2 include Arthrogryposis, Distal, Type 6 and Arthrogryposis, Distal, Type 7. Gene Ontology (GO) annotations related to this gene include heme binding and steroid binding. An important paralog of this gene is PGRMC1.
Molecular Mass	23.8 kDa
AA Sequence	MAAGDGDVKGTLGSGSESSNDGGSESPGDAGAAAEGGGWAAAALALLTGGGEM LLNVALVALVLLGAYRLWVRWGRRGLGAGAGAGEESPATSLPRMKKRDFSLEQLR QYDGSRNPRILLAVNGKVFDVTKGSKFYGPAGPYGIFAGRDRGLATFCLDKDAL RDEYDDLSDLNAVQMESVREWEMQFKEKYDYVGRLLKPGEEPSEYTDEEDTKDHN KQDTRTRPLEQKLISEEDLAANDILDYKDDDDKV
Purity	> 80% as determined by SDS-PAGE and Coomassie blue staining
Stability	Stable for 3 months from receipt of products under proper storage and handling

 Tel: 1-631-559-9269 1-516-512-3133

 Email: info@creative-biomart.com  Fax: 1-631-938-8127

 45-1 Ramsey Road, Shirley, NY 11967, USA

conditions.

Storage Store at -80 centigrade. Avoid repeated freeze-thaw cycles.

Concentration 50 µg/mL as determined by BCA

Storage Buffer 100 mM glycine, 25 mM Tris-HCl, pH 7.3.

GENE INFORMATION

Gene Name PGRMC2 progesterone receptor membrane component 2 [Homo sapiens (human)]

Official Symbol PGRMC2

Synonyms PGRMC2; progesterone receptor membrane component 2; membrane-associated progesterone receptor component 2; DG6; PMBP; steroid receptor protein DG6; progesterone membrane binding protein;

Gene ID 10424

mRNA Refseq NM_006320

Protein Refseq NP_006311

MIM 607735

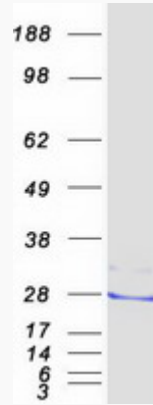
UniProt ID O15173

 Tel: 1-631-559-9269 1-516-512-3133

 Email: info@creative-biomart.com  Fax: 1-631-938-8127

 45-1 Ramsey Road, Shirley, NY 11967, USA

SDS-PAGE



 Tel: 1-631-559-9269 1-516-512-3133

 Email: info@creative-biomart.com  Fax: 1-631-938-8127

 45-1 Ramsey Road, Shirley, NY 11967, USA