

Recombinant Human PHACTR2 Protein, MYC/DDK-tagged, C13 and N15-labeled

Cat. No. PHACTR2-394H **Lot. No.** (See product label)

SPECIFICATION

Product Overview

PHACTR2 MS Standard C13 and N15-labeled recombinant protein (NP_001093634) with a C-terminal MYC/DDK tag, was expressed in HEK293 cells.

Species

Human

Source

HEK293

Description

Broad expression in placenta (RPKM 29.1), adrenal (RPKM 11.9) and 22 other tissues

Molecular Mass

70.5 kDa

AA Sequence

MGQTSVSTLSPQPGSVDGLDKASIANSDGPTAGSQTPPFKRKGLSTIGKIFKPWK
 WRKKKTSDFRETSAVLERKISTRQSREELIRRGVLKELPDQDGDVTVNFENSNGH
 MIPIGEEESTREENVVKSEEGNGSVSEKTPPLEEQAEDKKENTENHSETPAAPALPPS
 APPKPRPKPKPKKSPVPPKGATAGASHKGDEVPIKNTKAPGKQAPVPPPKPASR
 NTTREAAGSSHSKTTGSKASASPSTSSTSSRPKASKETVSSKAGTVGTTKGKRKT
 DKQPITSHLSSDTTTSGETSDLKGEPAETRVESFKLEQTVPGAEEQNTGKFKSMVPPP
 PVAPAPSPLAPPLPLEDQCITASDTPVVLVSVGADLPVSALDPSQLLWAEPTNRTTL
 YSGTGLSVNRENAKCFITKEELGKTVPQLLTPGLMGESSESFSASEDEGHREYQAN
 DSDSDGPILYTDDEDEDEDEDGSGESALASKIRRRDTLAIKLGNRPSKKELEDKNILQ
 RTSEEERQEIRQQIGTKLVRRLSQRPTTEELEQRNLIKQKNEEEEQEAKMELKRRLS
 RKLSLRPTVAELQARRILRFNEYVEVTDSPDYDRRADKPWARLTPADKAAIRKELNE

 Tel: 1-631-559-9269 1-516-512-3133

 Email: info@creative-biomart.com  Fax: 1-631-938-8127

 45-1 Ramsey Road, Shirley, NY 11967, USA

FKSTEMEVHEESRQFTRFHRPTRTRPLEQKLISEEDLAANDILDYKDDDDKV

Purity > 80% as determined by SDS-PAGE and Coomassie blue staining

Stability Stable for 3 months from receipt of products under proper storage and handling conditions.

Storage Store at -80 centigrade. Avoid repeated freeze-thaw cycles.

Concentration 50 µg/mL as determined by BCA

Storage Buffer 100 mM glycine, 25 mM Tris-HCl, pH 7.3.

GENE INFORMATION

Gene Name PHACTR2 phosphatase and actin regulator 2 [Homo sapiens (human)]

Official Symbol PHACTR2

Synonyms PHACTR2; phosphatase and actin regulator 2; C6orf56, chromosome 6 open reading frame 56; KIAA0680; C6orf56; MGC176642; DKFZp686F18175;

Gene ID 9749

mRNA Refseq NM_001100164

Protein Refseq NP_001093634

MIM 608724

UniProt ID O75167

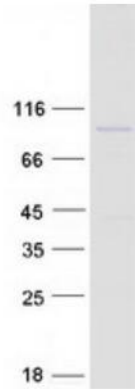
 Tel: 1-631-559-9269 1-516-512-3133

 Email: info@creative-biomart.com  Fax: 1-631-938-8127

 45-1 Ramsey Road, Shirley, NY 11967, USA



SDS-PAGE



Tel: 1-631-559-9269 1-516-512-3133

Email: info@creative-biomart.com Fax: 1-631-938-8127

45-1 Ramsey Road, Shirley, NY 11967, USA