

# Recombinant Human PHB Protein, Myc/DDK-tagged, C13 and N15-labeled

**Cat. No.** PHB-1257H    **Lot. No.** (See product label)

## SPECIFICATION

<b>Product Overview</b>	PHB MS Standard C13 and N15-labeled recombinant protein (NP_002625) with a C-terminal MYC/DDK tag, was expressed in HEK293 cells.
<b>Species</b>	Human
<b>Source</b>	HEK293
<b>Description</b>	This gene is evolutionarily conserved, and its product is proposed to play a role in human cellular senescence and tumor suppression. Antiproliferative activity is reported to be localized to the 3' UTR, which is proposed to function as a trans-acting regulatory RNA. Several pseudogenes of this gene have been identified. Alternative splicing results in multiple transcript variants.
<b>Molecular Mass</b>	29.6 kDa
<b>AA Sequence</b>	MAAKVFESIGKFGALAVAGGVVNSALYNVDAGHRAVIFDRFRGVQDIVVGEETHFL IPWVQKPIIFDCRSRPRNVPVITGSKDLQNVNITLRLFRPVASQLPRIFTSIGEDYDER VLPSITTEILKSVVARFDAGELITQRELVSRQVSDDLTERAATFGLILDDVSLTHLTFGK EFTEAVEAKQVAQQEAERARFVVEKAEQQKKAIIISAEGDSKAAELIANSLATAGDG LIELRKLEAAEDIAYQLSRSRNITYLPAGQSVLLQLPQTRTRPLEQKLISEEDLAANDIL DYKDDDDKV
<b>Purity</b>	> 80% as determined by SDS-PAGE and Coomassie blue staining

 Tel: 1-631-559-9269    1-516-512-3133

 Email: [info@creative-biomart.com](mailto:info@creative-biomart.com)     Fax: 1-631-938-8127

 45-1 Ramsey Road, Shirley, NY 11967, USA



<b>Stability</b>	Stable for 3 months from receipt of products under proper storage and handling conditions.
<b>Storage</b>	Store at -80 centigrade. Avoid repeated freeze-thaw cycles.
<b>Concentration</b>	50 µg/mL as determined by BCA
<b>Storage Buffer</b>	100 mM glycine, 25 mM Tris-HCl, pH 7.3.

## GENE INFORMATION

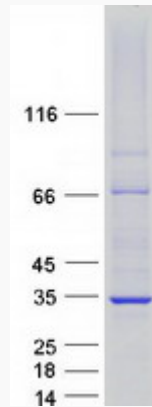
<b>Gene Name</b>	PHB prohibitin [ Homo sapiens (human) ]
<b>Official Symbol</b>	PHB
<b>Synonyms</b>	PHB; prohibitin; PHB1; HEL-215; HEL-S-54e; prohibitin; epididymis luminal protein 215; epididymis secretory sperm binding protein Li 54e
<b>Gene ID</b>	5245
<b>mRNA Refseq</b>	NM_002634
<b>Protein Refseq</b>	NP_002625
<b>MIM</b>	176705
<b>UniProt ID</b>	P35232

Tel: 1-631-559-9269 1-516-512-3133

Email: [info@creative-biomart.com](mailto:info@creative-biomart.com) Fax: 1-631-938-8127

45-1 Ramsey Road, Shirley, NY 11967, USA

SDS-PAGE



 Tel: 1-631-559-9269 1-516-512-3133

 Email: [info@creative-biomart.com](mailto:info@creative-biomart.com)  Fax: 1-631-938-8127

 45-1 Ramsey Road, Shirley, NY 11967, USA