

Recombinant Full Length Human PHGDH Protein, C-Flag-tagged

Cat. No. PHGDH-1414HFL **Lot. No.** (See product label)

SPECIFICATION

Product Overview	Recombinant Full Length Human PHGDH Protein, fused to Flag-tag at C-terminus, was expressed in Mammalian cells.
Species	Human
Source	Mammalian Cells
Description	This gene encodes the enzyme which is involved in the early steps of L-serine synthesis in animal cells. L-serine is required for D-serine and other amino acid synthesis. The enzyme requires NAD/NADH as a cofactor and forms homotetramers for activity. Mutations in this gene have been found in a family with congenital microcephaly, psychomotor retardation and other symptoms. Multiple alternatively spliced transcript variants have been found, however the full-length nature of most are not known.
Form	25 mM Tris HCl, pH 7.3, 100 mM glycine, 10% glycerol.
Molecular Mass	56.5 kDa
AA Sequence	MAFANLRKVLISDSLDPCCRKILQDGGGLQVVEKQNLKSKEELIAELQDCEGLIVRSATK VTADVINA AEKL QVVGRAGTGVDNVDLEAATRKGILVMNTPNGNSLSAAELTCGMI MCLARQIPQATASMKGDKWERKKFMG TELNGKTLGILGLGRIGREVATRMQSFGM KTIGYDPIISPEVSASFGVQQLPLEEIWPLCDFITVHTPLL PSTTGLLNDNTFAQCKKG VRVVNCARGGIVDEGALLRALQSGQCAGAALDVFTEEPDRDRALVDHENVIS CPHL

 Tel: 1-631-559-9269 1-516-512-3133

 Email: info@creative-biomart.com  Fax: 1-631-938-8127

 45-1 Ramsey Road, Shirley, NY 11967, USA



GASTKEAQSRCGEEIAVQFVDMVKGKSLTGVVNAQALTSAFSPHTKPWIGLAEALG
 TLMRAWAGSP KGTIQVITQGTSLKNAGNCLSPAVIVGLLKEASKQADVNLVNAKLLV
 KEAGLNVTTSHSPAAPGEGQGFGE CLLAVALAGAPYQAVGLVQGTTPVLQGLNGAV
 FRPEVPLRRDLPLLLFRTQTSDPAMLPTMIGLLAEAGV
 RLLSYQTSLVSDGETWHVMGISSLLPSLEAWKQHVTEAFQFHFRTRTRPLEQKLISEE
 DLAANDILDYKDDDDKV

Purity	> 80% as determined by SDS-PAGE and Coomassie blue staining.
Stability	Stable for 12 months from the date of receipt of the product under proper storage and handling conditions. Avoid repeated freeze-thaw cycles.
Storage	Store at -80 centigrade.
Concentration	>50 ug/mL as determined by microplate BCA method.
Preparation	Recombinant protein was captured through anti-DDK affinity column followed by conventional chromatography steps.
Protein Families	Druggable Genome, Stem cell - Pluripotency
Protein Pathways	Glycine, serine and threonine metabolism, Metabolic pathways
Full Length	Full L.

GENE INFORMATION

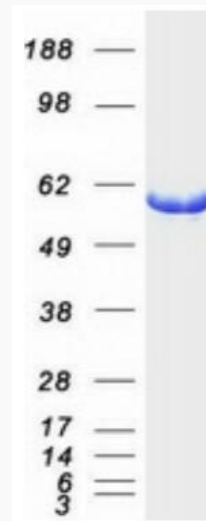
Gene Name	PHGDH phosphoglycerate dehydrogenase [Homo sapiens (human)]
Official Symbol	PHGDH

Tel: 1-631-559-9269 1-516-512-3133

Email: info@creative-biomart.com Fax: 1-631-938-8127

45-1 Ramsey Road, Shirley, NY 11967, USA

Synonyms	NLS; PDG; PGD; NLS1; PGAD; PGDH; SERA; 3PGDH; 3-PGDH; PHGDHD; HEL-S-113
Gene ID	26227
mRNA Refseq	NM_006623.4
Protein Refseq	NP_006614.2
MIM	606879
UniProt ID	O43175



Coomassie blue staining of purified PHGDH protein.

 Tel: 1-631-559-9269 1-516-512-3133

 Email: info@creative-biomart.com  Fax: 1-631-938-8127

 45-1 Ramsey Road, Shirley, NY 11967, USA