

Recombinant Human PHLPP1 protein, GST-tagged

Cat. No. PHLPP1-107H Lot. No. (See product label)

SPECIFICATION

| | |
|-------------------------|---|
| Product Overview | Recombinant Human PHLPP1 protein(NP_919431)(1068-1204 aa), fused to GST tag, was expressed in E. coli. |
| Species | Human |
| Source | E.coli |
| ProteinLength | 1068-1204 aa |
| Form | The purified protein was Lyophilized from sterile PBS (58mM Na ₂ HPO ₄ , 17mM NaH ₂ PO ₄ , 68mM NaCl, pH8.). 5 % trehalose and 5 % mannitol are added as protectants before lyophilization. |
| AA Sequence | QQHLLQVPAEASDEGIVISANEDEPGLPRKADFSAVGTIGRRRANGSVAPQERSHN VIEVATDAPLRKPGGYFAAPAQPDPDDQFIIPPELEEEVKEIMKHHQEQQQQQPPPP PPQLQPQLPRHYQLDQLPDYYDTP |
| Purity | 85%, by SDS-PAGE with Coomassie Brilliant Blue staining. |
| Storage | Short-term storage: Store at 2-8°C for (1-2 weeks). Long-term storage: Aliquot and store at -20°C to -80°C for up to 3 months, buffer containing 50% glycerol is recommended for reconstitution. Avoid repeat freeze-thaw cycles. |
| Reconstitution | Reconstitute at 0.25 g/μl in 200 μl sterile water for short-term storage. |

 Tel: 1-631-559-9269 1-516-512-3133

 Email: info@creative-biomart.com  Fax: 1-631-938-8127

 45-1 Ramsey Road, Shirley, NY 11967, USA

Reconstitution with 200 µl 50% glycerol solution is recommended for longer term storage (see Stability and Storage for more details).

If a different concentration is needed for your purposes please adjust the reconstitution volume as required (please note: the ion concentration of the final solution will vary according to the volume used).

Note: Centrifuge vial before opening. When reconstituting, gently pipet and wash down the sides of the vial to ensure full recovery of the protein into solution.

GENE INFORMATION

Gene Name [PHLPP1 PH domain and leucine rich repeat protein phosphatase 1 \[Homo sapiens \]](#)

Official Symbol [PHLPP1](#)

Synonyms

PHLPP1; PH domain and leucine rich repeat protein phosphatase 1; PH domain and leucine rich repeat protein phosphatase , PHLPP, pleckstrin homology domain containing, family E (with leucine rich repeats) member 1 , PLEKHE1; PH domain leucine-rich repeat-containing protein phosphatase 1; KIAA0606; SCOP; SCN circadian oscillatory protein; PH domain-containing family E member 1; suprachiasmatic nucleus circadian oscillatory protein; pleckstrin homology domain containing, family E (with leucine rich repeats) member 1; PHLPP; PLEKHE1; MGC161555;

Gene ID [23239](#)


mRNA Refseq [NM_194449](#)

Protein Refseq [NP_919431](#)

MIM [609396](#)

 Tel: 1-631-559-9269 1-516-512-3133

 Email: info@creative-biomart.com  Fax: 1-631-938-8127

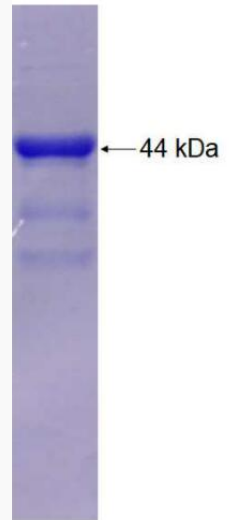
 45-1 Ramsey Road, Shirley, NY 11967, USA



UniProt ID

O60346

SDS-PAGE



Tel: 1-631-559-9269 1-516-512-3133

Email: info@creative-biomart.com Fax: 1-631-938-8127

45-1 Ramsey Road, Shirley, NY 11967, USA