

# Recombinant Full Length Human PHLPP1 Protein, C-Flag-tagged

Cat. No. PHLPP1-1697HFL Lot. No. (See product label)

## SPECIFICATION

<b>Product Overview</b>	Recombinant Full Length Human PHLPP1 Protein, fused to Flag-tag at C-terminus, was expressed in Mammalian cells.
<b>Species</b>	Human
<b>Source</b>	Mammalian Cells
<b>Description</b>	This gene encodes a member of the serine/threonine phosphatase family. The encoded protein promotes apoptosis by dephosphorylating and inactivating the serine/threonine kinase Akt, and functions as a tumor suppressor in multiple types of cancer. Increased expression of this gene may also play a role in obesity and type 2 diabetes by interfering with Akt-mediated insulin signaling.
<b>Form</b>	25 mM Tris HCl, pH 7.3, 100 mM glycine, 10% glycerol.
<b>Molecular Mass</b>	184.5 kDa
<b>AA Sequence</b>	MEPAAAATVQRLPELGREDRASAPAAAAAAAAAAAAAAAAALAAAAGGGRSPEPALT PAAPSGGNGSGSGAREEAPGEAPPGLPGRAGGAGRRRRRGAPQPIAGGAAPVP GAGGGANSLLLRRGRLKRNLAAAAAASSSSSSSSAAAASHSPGAAGLPASCSASAS LCTRSLDRKTLKLRQTLQLQPSDRDWVRHQLQRGCVHVFDRHMASTYLRPVLC TLDTTAGEVAARLLQLGHKGGGVVVKVLGQGPAAAAAREPAEPPPEAGPRLAPPEP RDSEVPPARSAPGAFGGPPRAPPADLPLVGGPGGWSRRASPAPSDSSPGEPFV GGPVSSPRAPRPVSDTESFSLSPSAESVSDRLDPYSSGGGSSSSSSEELEADAASA

Tel: 1-631-559-9269 1-516-512-3133

Email: [info@creative-biomart.com](mailto:info@creative-biomart.com) Fax: 1-631-938-8127

45-1 Ramsey Road, Shirley, NY 11967, USA



PTGVPGQPRRPGHPAQPLPLPQTASSPQPQQKAPRAIDSPGGAVREGSCEEKAAA  
 AVAPGGLQSTPGRSGVTAEKAPPPPPPTLYVQLHGETTRRLEAEEKPLQIQNDYLF  
 QLGFGELWRVQEEGMDSEIGCLIRFYAGKPHSTGSSERIQLSGMYNVRKGMQLPV  
 NRWTRRQVILCGTCLIVSSVKDSLTKMHVPLLIGGKVEEVKKHQHCLAFSSSGPQS  
 QTYIICFDTFTEYLRWLRQVSKVASQRISVDLSCCSLEHLPANLFYSQDLTHLNK  
 QNFLRQNPSLPAARGLNELQRFTKLKSLNLSNNHLGDFPLAVCSIPTLAELNVSCNA  
 LRSVPAAVGVMHNLQTFLLDGNFLQSLPAELENMKQLSYLGLSFNEFTDIPEVLEKLT  
 AVDKLCMSGNCVETLRLQALRKMPHIKHVDLRLNVIRKLIADDEVDFLQHVTQLDLRD  
 NKLGDLDAMIFNIEVLHCERNQLVTLDICGYFLKALYASSNELVQLDVYPVPNYLSY  
 MDVSRNRENVPEWVCESRKLEVLDIGHNQICELPARLFCNSSLRKLLAGHNQLARL  
 PERLERTSVEVLQVQHNQLELPPNLLMKADSLRFLNASANKLESPPATLSEETNSI  
 LQELYLTNNSLTDKCVPLLTGHPHLKILHMAYNRLQSFPAKMAKLEEEIDLSGNK  
 LKAIPPTIMNCRRMHTVIAHSNCIEVFPEVMQLPEIKCVDLSCNELSEVTLPENLPPKL  
 QELDLTGNPRLVLDHKTLELLNIRCFKIDQPSTGDASGAPAVWSHGYTEASGVKNK  
 LCVAALSVNNFCDNREALYGVFDGDRNVEVPYLLQCTMSDILAEELQKTKNEEYEM  
 VNTFIVMQRKLG TAGQKLGGA AVLCHIKHDPVDPGGSFTLTSANVGKQCQTVLCRNG  
 KPLPLRSYIMSCEEELKRIKQHKAIITEDGKVNGVTESTRILGYTFLHPSVVRPHVQ  
 SVLLTPQDEFFILGSKGLWDSLSVEEAVEAVRNVPDALAAKKLCTLAQSYGCHDSI  
 SAVVVQLSVTEDSFCCCELSAGGAVPPPSPGIFPPSVNMVIKDRPSDGLGVPSSSS  
 GMASEISSELSTSEMSSEVGSTASDEPPPGALSNSPAPYSEQRCM LHPICLSNSF  
 QRQLSSATFSSAFSDNGLDSDDEEPIEGVFTNGSRVEVEVDIHCSRAKEKEKQQHLL  
 QVPAEASDEGIVISANEDEPGLPRKADFSAVGTIGRRRANGSVAPQERSHNVIEVAT  
 DAPLRKPGGYFAAPAQPDPDDQFIIPPELEEEVKEIMKHHQEQQQQQPPPPPQLQ  
 PQLPRHYQLDQLPDYYDTPLTRTRPLEQKLISEEDLAANDILDYKDDDDKV

**Purity**

> 80% as determined by SDS-PAGE and Coomassie blue staining.

**Stability**

Stable for 12 months from the date of receipt of the product under proper storage and handling conditions. Avoid repeated freeze-thaw cycles.

Tel: 1-631-559-9269 1-516-512-3133

Email: [info@creative-biomart.com](mailto:info@creative-biomart.com) Fax: 1-631-938-8127

45-1 Ramsey Road, Shirley, NY 11967, USA

<b>Storage</b>	Store at -80 centigrade.
<b>Concentration</b>	>50 ug/mL as determined by microplate BCA method.
<b>Preparation</b>	Recombinant protein was captured through anti-DDK affinity column followed by conventional chromatography steps.
<b>Full Length</b>	Full L.

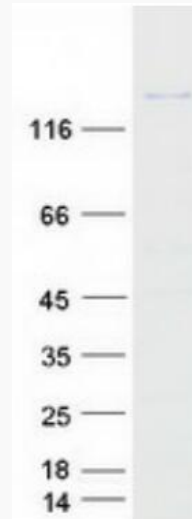
## GENE INFORMATION

<b>Gene Name</b>	PHLPP1 PH domain and leucine rich repeat protein phosphatase 1 [ Homo sapiens (human) ]
<b>Official Symbol</b>	PHLPP1
<b>Synonyms</b>	SCOP; PHLPP; PPM3A; PLEKHE1
<b>Gene ID</b>	23239
<b>mRNA Refseq</b>	NM_194449.4
<b>Protein Refseq</b>	NP_919431.2
<b>MIM</b>	609396
<b>UniProt ID</b>	O60346

 Tel: 1-631-559-9269 1-516-512-3133

 Email: [info@creative-biomart.com](mailto:info@creative-biomart.com)  Fax: 1-631-938-8127

 45-1 Ramsey Road, Shirley, NY 11967, USA



Coomassie blue staining of purified PHLPP1 protein.

Tel: 1-631-559-9269 1-516-512-3133

Email: [info@creative-biomart.com](mailto:info@creative-biomart.com) Fax: 1-631-938-8127

45-1 Ramsey Road, Shirley, NY 11967, USA