

Recombinant Full Length Human PHYHIPL Protein, C-Flag-tagged

Cat. No. PHYHIPL-2139HFL **Lot. No.** (See product label)

SPECIFICATION

Product Overview	Recombinant Full Length Human PHYHIPL Protein, fused to Flag-tag at C-terminus, was expressed in Mammalian cells.
Species	Human
Source	Mammalian Cells
Description	Located in cytoplasm.
Form	25 mM Tris HCl, pH 7.3, 100 mM glycine, 10% glycerol.
Molecular Mass	42.3 kDa
AA Sequence	MEVPRLDHALNSPTSPCEEVIK NLSLEAIQLCDRDGNKSQDSGIAEMEELPVP HNIKI SNITCDSFKISW EMDSKSKDRITHYFIDL NKKENKNSNKFKHKDVPTKLVAKAVPLP MTVRGHWFLSPRTEYTVAVQTASKQ VGDYVVSEWSEIIIEFCTADYSKVHLTQ LLE KAEVIAGRMLKFSVFYRNQHK EYFDYVREHHGNAMQPSV KDNSGSHGSPISGKLE GIFFSCSTEFNTGKPPQDSPYGRYRFEIAAEKLFNPNTNLYFGDFYCMYTAYHY VIL VIAPVGGSPGDEFCKQRLPQLNSKDNKFLTCTEEDGVLVYHHAQDVILEVIYTDPVDLS LGTVAEITG HQLMSLSTANAKKDP SCKTCNISVGR TRTRPLEQKLISEEDLAANDILD YKDDDDKV
Purity	> 80% as determined by SDS-PAGE and Coomassie blue staining.

 Tel: 1-631-559-9269 1-516-512-3133

 Email: info@creative-biomart.com  Fax: 1-631-938-8127

 45-1 Ramsey Road, Shirley, NY 11967, USA

Stability	Stable for 12 months from the date of receipt of the product under proper storage and handling conditions. Avoid repeated freeze-thaw cycles.
Storage	Store at -80 centigrade.
Concentration	>50 ug/mL as determined by microplate BCA method.
Preparation	Recombinant protein was captured through anti-DDK affinity column followed by conventional chromatography steps.
Full Length	Full L.

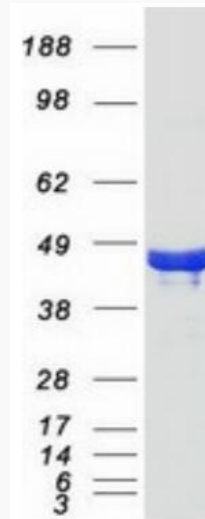
GENE INFORMATION

Gene Name	PHYHIPL phytanoyl-CoA 2-hydroxylase interacting protein like [Homo sapiens (human)]
Official Symbol	PHYHIPL
Synonyms	KIAA1796
Gene ID	84457
mRNA Refseq	NM_032439.4
Protein Refseq	NP_115815.2
UniProt ID	Q96FC7

 Tel: 1-631-559-9269 1-516-512-3133

 Email: info@creative-biomart.com  Fax: 1-631-938-8127

 45-1 Ramsey Road, Shirley, NY 11967, USA



Coomassie blue staining of purified PHYHIPL protein.

 Tel: 1-631-559-9269 1-516-512-3133

 Email: info@creative-biomart.com  Fax: 1-631-938-8127

 45-1 Ramsey Road, Shirley, NY 11967, USA