

Recombinant Human PI3 protein, His-tagged

Cat. No. PI3-01H Lot. No. (See product label)

SPECIFICATION

Product Overview	Recombinant Human PI3 protein, fused to His-tag, was expressed in E. coli.
Species	Human
Source	E.coli
ProteinLength	23-117aa
Description	This gene encodes an elastase-specific inhibitor that functions as an antimicrobial peptide against Gram-positive and Gram-negative bacteria, and fungal pathogens. The protein contains a WAP-type four-disulfide core (WFDC) domain, and is thus a member of the WFDC domain family. Most WFDC gene members are localized to chromosome 20q12-q13 in two clusters: centromeric and telomeric. This gene belongs to the centromeric cluster. Expression of this gene is upregulated by bacterial lipopolysaccharides and cytokines.
Form	Liquid in. 20mM Tris-HCl buffer (pH 8.0) containing 0.15M NaCl, 10% glycerol, 1mM DTT.
Molecular Mass	12 kDa
AA Sequence	MGSSHHHHHH SGLVPRGSH MSAVTGVPV KGQDTVKGRVFPNGQDPVKG QVSVKGQDKV KAEQPVKGPVSTKPGSCPII LIRCAMLNPP NRCLKDTDCPGIKKCEGSC GMACFVPQ

 Tel: 1-631-559-9269 1-516-512-3133

 Email: info@creative-biomart.com  Fax: 1-631-938-8127

 45-1 Ramsey Road, Shirley, NY 11967, USA

Purity	> 80%
Applications	SDS-PAGE
Storage	Can be stored at 2 centigrade to 8 centigrade for 1 week. For long term storage, aliquot and store at -20 centigrade to -80 centigrade. Avoid repeated freezing and thawing cycles.
Concentration	0.25mg/ml

GENE INFORMATION

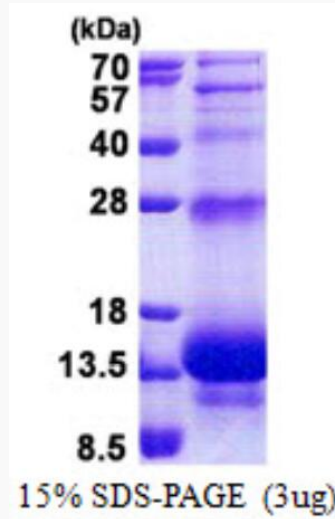
Gene Name	PI3 peptidase inhibitor 3 [Homo sapiens (human)]
Official Symbol	PI3
Synonyms	Elafin preproprotein; Cementoin; ESI; SKALP; WAP3; WFDC14
Gene ID	5266
mRNA Refseq	NM_002638
Protein Refseq	NP_002629
MIM	182257
UniProt ID	P19957

 Tel: 1-631-559-9269 1-516-512-3133

 Email: info@creative-biomart.com  Fax: 1-631-938-8127

 45-1 Ramsey Road, Shirley, NY 11967, USA

15% SDS-PAGE(3ug)



3ug by SDS-PAGE under reducing condition and visualized by coomassie blue stain.

 Tel: 1-631-559-9269 1-516-512-3133

 Email: info@creative-biomart.com  Fax: 1-631-938-8127

 45-1 Ramsey Road, Shirley, NY 11967, USA