

## Recombinant Human PI3 protein, His-tagged

Cat. No. PI3-02H Lot. No. (See product label)

### SPECIFICATION

<b>Product Overview</b>	Recombinant Human PI3 protein, fused to His-tag, was expressed in Insect cell.
<b>Species</b>	Human
<b>Source</b>	Insect Cells
<b>ProteinLength</b>	23-117aa
<b>Description</b>	This gene encodes an elastase-specific inhibitor that functions as an antimicrobial peptide against Gram-positive and Gram-negative bacteria, and fungal pathogens. The protein contains a WAP-type four-disulfide core (WFDC) domain, and is thus a member of the WFDC domain family. Most WFDC gene members are localized to chromosome 20q12-q13 in two clusters: centromeric and telomeric. This gene belongs to the centromeric cluster. Expression of this gene is upregulated by bacterial lipopolysaccharides and cytokines.
<b>Form</b>	Liquid in. Phosphate-Buffered Saline (pH 7.4) 10% glycerol.
<b>Molecular Mass</b>	10.7 kDa
<b>AA Sequence</b>	AVTGVPVKGQ DTVKGRVPFN GQDPVKGQVS VKGQDKVKAQ EPVKGPVSTK PGSCPIILIR CAMLNPPNRC LKDTDCPGIK KCCEGSCGMA CFVPQH HHHHH H
<b>Endotoxin</b>	< 1 EU per 1ug of protein (determined by LAL method).

 Tel: 1-631-559-9269 1-516-512-3133

 Email: [info@creative-biomart.com](mailto:info@creative-biomart.com)  Fax: 1-631-938-8127

 45-1 Ramsey Road, Shirley, NY 11967, USA

<b>Purity</b>	> 85%
<b>Applications</b>	SDS-PAGE
<b>Storage</b>	Can be stored at 2 centigrade to 8 centigrade for 1 week. For long term storage, aliquot and store at -20 centigrade to -80 centigrade. Avoid repeated freezing and thawing cycles.
<b>Concentration</b>	0.2mg/ml

## GENE INFORMATION

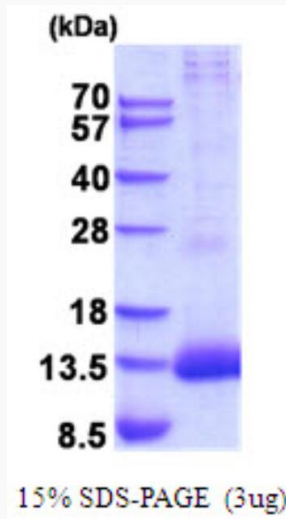
<b>Gene Name</b>	PI3 peptidase inhibitor 3 [ Homo sapiens (human) ]
<b>Official Symbol</b>	PI3
<b>Synonyms</b>	Elafin preproprotein; Cementoin; ESI; SKALP; WAP3; WFDC14
<b>Gene ID</b>	5266
<b>mRNA Refseq</b>	NM_002638
<b>Protein Refseq</b>	NP_002629
<b>MIM</b>	182257
<b>UniProt ID</b>	P19957

 Tel: 1-631-559-9269 1-516-512-3133

 Email: [info@creative-biomart.com](mailto:info@creative-biomart.com)  Fax: 1-631-938-8127

 45-1 Ramsey Road, Shirley, NY 11967, USA

15% SDS-PAGE(3ug)



3ug by SDS-PAGE under reducing condition and visualized by Coomassie blue stain.

 Tel: 1-631-559-9269 1-516-512-3133

 Email: [info@creative-biomart.com](mailto:info@creative-biomart.com)  Fax: 1-631-938-8127

 45-1 Ramsey Road, Shirley, NY 11967, USA