

# Recombinant Full Length Human PI3 Protein, C-Flag-tagged

**Cat. No.** PI3-1204HFL    **Lot. No.** (See product label)

## SPECIFICATION

<b>Product Overview</b>	Recombinant Full Length Human PI3 Protein, fused to Flag-tag at C-terminus, was expressed in Mammalian cells.
<b>Species</b>	Human
<b>Source</b>	Mammalian Cells
<b>Description</b>	This gene encodes an elastase-specific inhibitor that functions as an antimicrobial peptide against Gram-positive and Gram-negative bacteria, and fungal pathogens. The protein contains a WAP-type four-disulfide core (WFDC) domain, and is thus a member of the WFDC domain family. Most WFDC gene members are localized to chromosome 20q12-q13 in two clusters: centromeric and telomeric. This gene belongs to the centromeric cluster. Expression of this gene is upregulated by bacterial lipopolysaccharides and cytokines.
<b>Form</b>	25 mM Tris HCl, pH 7.3, 100 mM glycine, 10% glycerol.
<b>Molecular Mass</b>	9.9 kDa
<b>AA Sequence</b>	MRASSFLIVVVFLIAGTLVLEAAVTGVPVKGQDTVKGRVFPNGQDPVKGQVSVKGGQ DKVKAQEPVKGPVS TKPGSCPIILIRCAMLNPPNRCLKDTCPGIKKCCGSCGMACFVPQTRTRPLEQKLI SEEDLAANDILDYKDDDDKV
<b>Purity</b>	> 80% as determined by SDS-PAGE and Coomassie blue staining.

 Tel: 1-631-559-9269    1-516-512-3133

 Email: [info@creative-biomart.com](mailto:info@creative-biomart.com)     Fax: 1-631-938-8127

 45-1 Ramsey Road, Shirley, NY 11967, USA

<b>Stability</b>	Stable for 12 months from the date of receipt of the product under proper storage and handling conditions. Avoid repeated freeze-thaw cycles.
<b>Storage</b>	Store at -80 centigrade.
<b>Concentration</b>	>50 ug/mL as determined by microplate BCA method.
<b>Preparation</b>	Recombinant protein was captured through anti-DDK affinity column followed by conventional chromatography steps.
<b>Protein Families</b>	Secreted Protein, Transmembrane
<b>Full Length</b>	Full L.

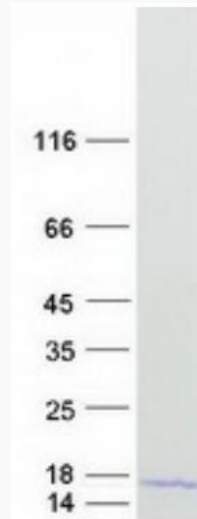
## GENE INFORMATION

<b>Gene Name</b>	PI3 peptidase inhibitor 3 [ Homo sapiens (human) ]
<b>Official Symbol</b>	PI3
<b>Synonyms</b>	ESI; WAP3; SKALP; WFDC14; cementoin
<b>Gene ID</b>	5266
<b>mRNA Refseq</b>	NM_002638.4
<b>Protein Refseq</b>	NP_002629.1
<b>MIM</b>	182257
<b>UniProt ID</b>	P19957

 Tel: 1-631-559-9269 1-516-512-3133

 Email: [info@creative-biomart.com](mailto:info@creative-biomart.com)  Fax: 1-631-938-8127

 45-1 Ramsey Road, Shirley, NY 11967, USA



Coomassie blue staining of purified P13 protein.

 Tel: 1-631-559-9269 1-516-512-3133

 Email: [info@creative-biomart.com](mailto:info@creative-biomart.com)  Fax: 1-631-938-8127

 45-1 Ramsey Road, Shirley, NY 11967, USA