

Recombinant Human PI3 protein, His-tagged

Cat. No. PI3-5494H Lot. No. (See product label)

SPECIFICATION

Product Overview	Recombinant Human PI3 protein(P19957)(61-117aa), fused to N-terminal His tag, was expressed in Yeast.
Species	Human
Source	Yeast
ProteinLength	61-117aa
Form	If the delivery form is liquid, the default storage buffer is Tris/PBS-based buffer, 5%-50% glycerol. If the delivery form is lyophilized powder, the buffer before lyophilization is Tris/PBS-based buffer, 6% Trehalose, pH 8.0.
Molecular Mass	8 kDa
Purity	Greater than 90% as determined by SDS-PAGE.
Storage	Store at -20°C/-80°C upon receipt, aliquoting is necessary for mutiple use. Avoid repeated freeze-thaw cycles.
Reconstitution	Please reconstitute protein in deionized sterile water to a concentration of 0.1-1.0 mg/mL. We recommend to add 5-50% of glycerol (final concentration) and aliquot for long-term storage at -20°C/-80°C. Our default final concentration of glycerol is 50%.

GENE INFORMATION

 Tel: 1-631-559-9269 1-516-512-3133

 Email: info@creative-biomart.com  Fax: 1-631-938-8127

 45-1 Ramsey Road, Shirley, NY 11967, USA

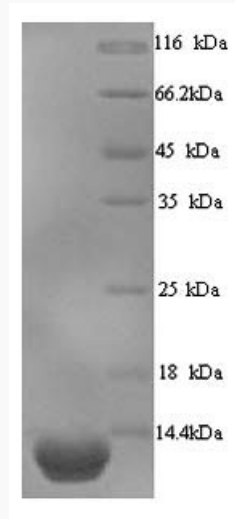
Gene Name	PI3 peptidase inhibitor 3, skin-derived [Homo sapiens]
Official Symbol	PI3
Synonyms	PI3; peptidase inhibitor 3, skin-derived; protease inhibitor 3, skin derived (SKALP); elafin; cementoin; ELAFIN; ESI; SKALP; skin derived antileukoproteinase; trappin 2; WAP3; WFDC14; PI-3; trappin-2; pre-elafin; protease inhibitor WAP3; elastase-specific inhibitor; skin-derived antileukoproteinase; WAP four-disulfide core domain 14; WAP four-disulfide core domain protein 14; protease inhibitor 3, skin-derived (SKALP); MGC13613;
Gene ID	5266
mRNA Refseq	NM_002638
Protein Refseq	NP_002629
MIM	182257
UniProt ID	P19957

 Tel: 1-631-559-9269 1-516-512-3133

 Email: info@creative-biomart.com  Fax: 1-631-938-8127

 45-1 Ramsey Road, Shirley, NY 11967, USA

SDS-PAGE



 Tel: 1-631-559-9269 1-516-512-3133

 Email: info@creative-biomart.com  Fax: 1-631-938-8127

 45-1 Ramsey Road, Shirley, NY 11967, USA