

## Recombinant Human PI4KA protein, His-tagged

Cat. No. PI4KA-1700H Lot. No. (See product label)

### SPECIFICATION

<b>Product Overview</b>	Recombinant Human PI4KA protein(1745-2044 aa), fused with N-terminal His tag, was expressed in E.coli.
<b>Species</b>	Human
<b>Source</b>	E.coli
<b>ProteinLength</b>	1745-2044 aa
<b>Form</b>	The purified protein was Lyophilized from sterile PBS (58mM Na <sub>2</sub> HPO <sub>4</sub> , 17mM NaH <sub>2</sub> PO <sub>4</sub> , 68mM NaCl, pH7.4). 5 % trehalose and 5 % mannitol are added as protectant before lyophilization. The elution buffer contain 300mM imidazole.
<b>AASequence</b>	YLAKFKVKRCGVSELEKEGLRCRSDSEDECSTQEADGQKISWQAAIFKVGDDCRQD MLALQIIDLFKNIFQLVGLDLFVFPYRVVATAPGCGVIECIPDCTSRDQLGRQTDFGM YDYFTRQYGDESTLAFQQARYNFIRSMAYSLLLFLLQIKDRHNGNIMLDKKGHIIHID FGFMFESSPGGNLWEPDIKLTDEMVMIMGGKMEATPFKWFMEMCVRGYLAVRPY MDAVVSLVTLMLDTGLPCFRGQTIKLLKHRFSPNMTEREAANFIMKVIQSCFLSNRS RTYDMIQYYQNDIPY
<b>Purity</b>	80%, by SDS-PAGE with Coomassie Brilliant Blue staining.
<b>Storage</b>	Store at 2-8°C for 1-2 weeks. Aliquot and store at -20°C to -80°C for up to 3 months, reconstitution with sterile water and addition of an equal volume of glycerol. Avoid repeat freeze-thaw cycles.

 Tel: 1-631-559-9269 1-516-512-3133

 Email: [info@creative-biomart.com](mailto:info@creative-biomart.com)  Fax: 1-631-938-8127

 45-1 Ramsey Road, Shirley, NY 11967, USA

**Reconstitution**

Dissolve the product in 200 µl sterile water to achieve a working concentration of 0.25 g/µl. If experimental compatibility allows, mix the aqueous solution with an equal volume of glycerol (1:1 ratio) after initial reconstitution.

## GENE INFORMATION

**Gene Name**

PI4KA phosphatidylinositol 4-kinase, catalytic, alpha [ Homo sapiens ]

**Official Symbol**

PI4KA

**Synonyms**

PI4KA; phosphatidylinositol 4-kinase, catalytic, alpha; PIK4CA; phosphatidylinositol 4-kinase alpha; PI4K ALPHA; pi4K230; PI4-kinase alpha; ptdIns-4-kinase alpha; phosphatidylinositol 4-kinase 230; phosphatidylinositol 4-kinase, type III, alpha; PI4K-ALPHA; FLJ16556;

**Gene ID**

5297

**mRNA Refseq**

NM\_002650

**Protein Refseq**

NP\_002641

**MIM**

600286

**UniProt ID**

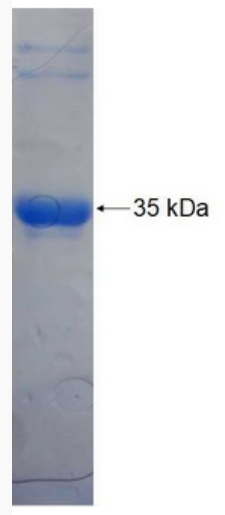
P42356

 Tel: 1-631-559-9269 1-516-512-3133

 Email: [info@creative-biomart.com](mailto:info@creative-biomart.com)  Fax: 1-631-938-8127

 45-1 Ramsey Road, Shirley, NY 11967, USA

**SDS-PAGE**



 Tel: 1-631-559-9269 1-516-512-3133

 Email: [info@creative-biomart.com](mailto:info@creative-biomart.com)  Fax: 1-631-938-8127

 45-1 Ramsey Road, Shirley, NY 11967, USA