

## Recombinant Human PI4KB Protein (Met1-Met801), C-His tagged

Cat. No. PI4KB-4906H Lot. No. (See product label)

### SPECIFICATION

<b>Product Overview</b>	Recombinant human PI4KB (Met1-Met801) fused with the C-terminal His tag was expressed in Mammalian cells.
<b>Species</b>	Human
<b>Source</b>	Mammalian Cells
<b>ProteinLength</b>	Met1-Met801
<b>Form</b>	Lyophilized powder/frozen liquid
<b>Molecular Mass</b>	88.11 kDa
<b>Purity</b>	>90% as determined by SDS-PAGE.
<b>Notes</b>	For research use only.
<b>Storage</b>	Use a manual defrost freezer and avoid repeated freeze thaw cycles. Store at 2 to 8 centigrade for one week. Store at -20 to -80 centigrade for twelve months from the date of receipt.
<b>Storage Buffer</b>	Supplied as solution form in PBS or lyophilized from PBS.
<b>Reconstitution</b>	Reconstitute in sterile water for a stock solution.

 Tel: 1-631-559-9269 1-516-512-3133

 Email: [info@creative-biomart.com](mailto:info@creative-biomart.com)  Fax: 1-631-938-8127

 45-1 Ramsey Road, Shirley, NY 11967, USA

**Shipping** They are shipped out with dry ice/blue ice unless customers require otherwise.

## GENE INFORMATION

**Gene Name** PI4KB phosphatidylinositol 4-kinase, catalytic, beta [ Homo sapiens (human) ]

**Official Symbol** PI4KB

**Synonyms** PI4KB; phosphatidylinositol 4-kinase, catalytic, beta; PIK4CB; phosphatidylinositol 4-kinase beta; PI4K BETA; pi4K92; PtdIns 4-kinase beta; type III phosphatidylinositol 4-kinase beta; phosphatidylinositol 4-kinase, wortmannin-sensitive; NPIK; PI4K92; PI4KBETA; PI4K-BETA; PI4KIIIBETA; FLJ30129; DKFZp686O1820;

**Gene ID** 5298

**mRNA Refseq** NM\_001198773

**Protein Refseq** NP\_001185702

**MIM** 602758

**UniProt ID** Q9UBF8

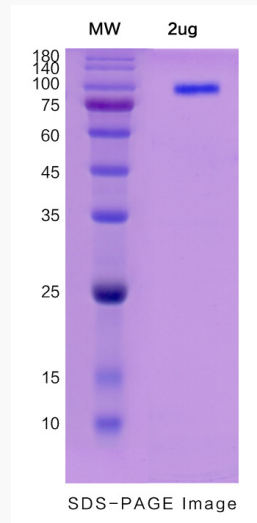
 Tel: 1-631-559-9269 1-516-512-3133

 Email: [info@creative-biomart.com](mailto:info@creative-biomart.com)  Fax: 1-631-938-8127

 45-1 Ramsey Road, Shirley, NY 11967, USA



**SDS-PAGE**



Tel: 1-631-559-9269 1-516-512-3133

Email: [info@creative-biomart.com](mailto:info@creative-biomart.com) Fax: 1-631-938-8127

45-1 Ramsey Road, Shirley, NY 11967, USA