

Recombinant Human PICALM Protein, Myc/DDK-tagged, C13 and N15-labeled

Cat. No. PICALM-4493H **Lot. No.** (See product label)

SPECIFICATION

Product Overview	PICALM MS Standard C13 and N15-labeled recombinant protein (NP_009097) with a C-terminal MYC/DDK tag, was expressed in HEK293 cells.
Species	Human
Source	HEK293
Description	This gene encodes a clathrin assembly protein, which recruits clathrin and adaptor protein complex 2 (AP2) to cell membranes at sites of coated-pit formation and clathrin-vesicle assembly. The protein may be required to determine the amount of membrane to be recycled, possibly by regulating the size of the clathrin cage. The protein is involved in AP2-dependent clathrin-mediated endocytosis at the neuromuscular junction. A chromosomal translocation t(10;11)(p13;q14) leading to the fusion of this gene and the MLLT10 gene is found in acute lymphoblastic leukemia, acute myeloid leukemia and malignant lymphomas. The polymorphisms of this gene are associated with the risk of Alzheimer disease. Multiple alternatively spliced transcript variants encoding different isoforms have been found for this gene.
Molecular Mass	70.6 kDa
AA Sequence	MSGQSLTDRITAAQHSVTGSAVSKTVCKATTHEIMGPKKKHLDYLIQCTNEMNVNIP QLADSLFERTTNSSWVVVFKSLITTHLMVYGNERFIQYLASRNTLFLNSNFLDKSGL QGYDMSTFIRRYRYLNEKAVSYRQVAFDFTKVKRGADGVMRTMNTEKLLKTVPIIQ

 Tel: 1-631-559-9269 1-516-512-3133

 Email: info@creative-biomart.com  Fax: 1-631-938-8127

 45-1 Ramsey Road, Shirley, NY 11967, USA

NQMDALLDFNVNSNELTNGVINAAMLLFKDAIRLFAAYNEGIINLLEKYFDMKKNQC
 KEGLDIYKKFLTRMTRISEFLKVAEQVGIDRGDIPDLSQAPSSLLDALEQHLASLEGKK
 IKDSTAASRATTLSSNAVSSLASTGLSLTKVDEREKQAALEEEQARLKALKEQRLKELA
 KKPHSLTAAASPVSTSAGGIMTAPAIIDIFSTPSSSNSTSKLPNDLLDLQQPTFHPSV
 HPMSTASQVASTWGDPPFSATVDAVDDAIPSLNPFLT KSSGDVHLSISSDVSTFTTRT
 PTHEMFVGFPTSPVAQPHPSAGLNVDVFESVFGNKSTNVIVDSGGFDELGLLKPTV
 ASQNQNLPAKLPSPKLVSDDLSSLANLVGNLGIGNGTTKNDVNWSQPGEKKLTG
 GSNWQPKVAPTTAWNAATMAPPVMAYPATTPTGMIGYGIPPQMGSVPVMTQPTLIY
 SQPVMRPPNPFPGPVSGAQIQFMTRTRPLEQKLISEEDLAANDILDYKDDDDKV

Purity > 80% as determined by SDS-PAGE and Coomassie blue staining

Stability Stable for 3 months from receipt of products under proper storage and handling conditions.

Storage Store at -80 centigrade. Avoid repeated freeze-thaw cycles.

Concentration 50 µg/mL as determined by BCA

Storage Buffer 100 mM glycine, 25 mM Tris-HCl, pH 7.3.

GENE INFORMATION

Gene Name [PICALM phosphatidylinositol binding clathrin assembly protein \[Homo sapiens \(human\) \]](#)

Official Symbol [PICALM](#)

Synonyms PICALM; phosphatidylinositol binding clathrin assembly protein; LAP; CALM; CLTH; phosphatidylinositol-binding clathrin assembly protein; clathrin assembly lymphoid myeloid leukemia protein

 Tel: 1-631-559-9269 1-516-512-3133

 Email: info@creative-biomart.com  Fax: 1-631-938-8127

 45-1 Ramsey Road, Shirley, NY 11967, USA

Gene ID 8301

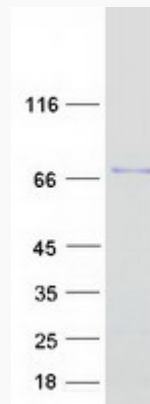
mRNA Refseq NM_007166

Protein Refseq NP_009097

MIM 603025

UniProt ID Q13492

SDS-PAGE



Tel: 1-631-559-9269 1-516-512-3133

Email: info@creative-biomart.com Fax: 1-631-938-8127

45-1 Ramsey Road, Shirley, NY 11967, USA