

# Active Recombinant Full Length Human PICALM Protein, C-Flag-tagged

Cat. No. PICALM-606HFL    Lot. No. (See product label)

## SPECIFICATION

### Product Overview

Recombinant Full Length Human PICALM Protein, fused to Flag-tag at C-terminus, was expressed in Mammalian cells.

### Species

Human

### Source

Mammalian Cells

### Description

This gene encodes a clathrin assembly protein, which recruits clathrin and adaptor protein complex 2 (AP2) to cell membranes at sites of coated-pit formation and clathrin-vesicle assembly. The protein may be required to determine the amount of membrane to be recycled, possibly by regulating the size of the clathrin cage. The protein is involved in AP2-dependent clathrin-mediated endocytosis at the neuromuscular junction. A chromosomal translocation t(10;11)(p13;q14) leading to the fusion of this gene and the MLLT10 gene is found in acute lymphoblastic leukemia, acute myeloid leukemia and malignant lymphomas. The polymorphisms of this gene are associated with the risk of Alzheimer disease. Multiple alternatively spliced transcript variants encoding different isoforms have been found for this gene.

### Form

25 mM Tris HCl, pH 7.3, 100 mM glycine, 10% glycerol.

### Bio-activity

In vitro binding assay

### Molecular Mass

70.6 kDa

 Tel: 1-631-559-9269    1-516-512-3133

 Email: [info@creative-biomart.com](mailto:info@creative-biomart.com)     Fax: 1-631-938-8127

 45-1 Ramsey Road, Shirley, NY 11967, USA

**AA Sequence**

MSGQSLTDRITAAQHSVTGSAVSKTVCKATTHEIMGPKKKHLDYLIQCTNEMNVNIP  
 QLADSLFERTTNS SWVVVFKSLITTHHLMVYGNRFIQYLASRNTLFNLSNFLDKSG  
 LQGYDMSTFIRRYSRYLNEKAVSYRQ VAFDFTKVKRGADGVMRTMNTKLLKTVPII  
 QNQMDALLDFNVNSNELTNGVINAAMLLFKDAIRLFAA YNEGIINLLEKYFDMKKNQ  
 CKEGLDIYKKFLTRMTRISEFLKVAEQVGIDRGDIPDLSQAPSSLLDALEQ HLASLEG  
 KKIKDSTAASRATTLSSNAVSSLASTGLSLTKVDEREKQAALEEEQARLKALKEQRLKE  
 LAKKP HTSLTTAASPVSTSAGGIMTAPAIIDIFSTPSSSNSTSKLPNDLLDLQQPTFHP  
 SVHPMSTASQVASTWGD PFSATVDAVDDAIPSLNPFLTSSGSDVHLSISSDVSTFTT  
 RTPTHEMFVGFTPSPVAQPHPSAGLNVD FE SVFGNKSTNVIVDSGGFDELGGLLKP  
 TVASQNLQNPVAKLPPSKLVSDDLSSLANLVGNLIGINGTTKN DVNWSQPGEKKL  
 TGGSNWQPKVAPTTAWNAATMAPPVMAYPATTPTGMIGYGIPPQMGSVPVMTQPT  
 LIY  
 SQPVMRPPNPFPGPVSGAQIQFMTRTRPLEQKLISEEDLAANDILDYKDDDDKV

**Purity** > 80% as determined by SDS-PAGE and Coomassie blue staining.

**Stability** Stable for 12 months from the date of receipt of the product under proper storage and handling conditions. Avoid repeated freeze-thaw cycles.

**Storage** Store at -80 centigrade.

**Concentration** >50 ug/mL as determined by microplate BCA method.

**Preparation** Recombinant protein was captured through anti-DDK affinity column followed by conventional chromatography steps.

**Protein Families** Druggable Genome

**Full Length** Full L.

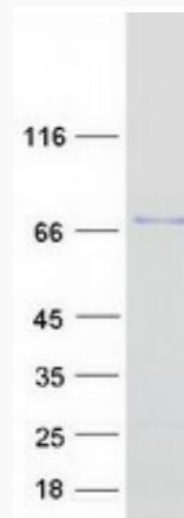
 Tel: 1-631-559-9269 1-516-512-3133

 Email: [info@creative-biomart.com](mailto:info@creative-biomart.com)  Fax: 1-631-938-8127

 45-1 Ramsey Road, Shirley, NY 11967, USA

**GENE INFORMATION**

<b>Gene Name</b>	PICALM phosphatidylinositol binding clathrin assembly protein [ Homo sapiens (human) ]
<b>Official Symbol</b>	PICALM
<b>Synonyms</b>	LAP; CALM; CLTH
<b>Gene ID</b>	8301
<b>mRNA Refseq</b>	NM_007166.4
<b>Protein Refseq</b>	NP_009097.2
<b>MIM</b>	603025
<b>UniProt ID</b>	Q13492



 Tel: 1-631-559-9269 1-516-512-3133

 Email: [info@creative-biomart.com](mailto:info@creative-biomart.com)  Fax: 1-631-938-8127

 45-1 Ramsey Road, Shirley, NY 11967, USA



Coomassie blue staining of purified PICALM protein.

 Tel: 1-631-559-9269 1-516-512-3133

 Email: [info@creative-biomart.com](mailto:info@creative-biomart.com)  Fax: 1-631-938-8127

 45-1 Ramsey Road, Shirley, NY 11967, USA