

## Recombinant Human PICK1 Protein (1-200 aa), GST-tagged

Cat. No. PICK1-1216H Lot. No. (See product label)

### SPECIFICATION

**Product Overview** Recombinant Human PICK1 Protein (1-200 aa) is produced by E. coli expression system. This protein is fused with a GST tag at the N-terminal. Research Area: Signal Transduction. Protein Description: Partial.

**Species** Human

**Source** E.coli

**ProteinLength** 1-200 aa

**Description** Probable adapter protein that bind to and organize the subcellular localization of a variety of mbrane proteins containing some PDZ recognition sequence. Involved in the clustering of various receptors, possibly by acting at the receptor internalization level. Plays a role in synaptic plasticity by regulating the trafficking and internalization of AMPA receptors. May be regulated upon PRKCA activation. May regulate ASIC1/ASIC3 channel. Regulates actin polymerization by inhibiting the actin-nucleating activity of the Arp2/3 complex; the function is competetive with nucleation promoting factors and is linked to neuronal morphology regulation and AMPA receptor (AMPA) endocytosis. Via interaction with the Arp2/3 complex involved in regulation of synaptic plasicity of excitatory synapses and required for spine shrinkage during long-term depression (LTD). Involved in regulation of astrocyte morphology, antagonistic to Arp2/3 complex activator WASL/N-WASP function.

**Form** Tris-based buffer,50% glycerol

 Tel: 1-631-559-9269 1-516-512-3133

 Email: [info@creative-biomart.com](mailto:info@creative-biomart.com)  Fax: 1-631-938-8127

 45-1 Ramsey Road, Shirley, NY 11967, USA

<b>Molecular Mass</b>	48.9 kDa
<b>AA Sequence</b>	MFADLDYDIEEDKLGIPVPGKVTLQKDAQNLIGISIGGGAQYCPCLYIVQVFDNTPAA LDGTVAAGDEITGVNGRSIIKGTKVEVAKMIQEVKGEVTIHYNKLQADPKQGMSLDI VLKKVKHRLVENMSSGTADALGLSRAILCNDGLVKRLEELERTAELYKGMTEHTKNL LRAFYELSQTHRAFGDVFSVIGVREPO
<b>Purity</b>	> 90% as determined by SDS-PAGE.
<b>Notes</b>	Repeated freezing and thawing is not recommended. Store working aliquots at 4 centigrade for up to one week.
<b>Storage</b>	The shelf life is related to many factors, storage state, buffer ingredients, storage temperature and the stability of the protein itself. Generally, the shelf life of liquid form is 6 months at -20 centigrade/-80 centigrade. The shelf life of lyophilized form is 12 months at -20 centigrade/-80 centigrade.
<b>Concentration</b>	A hardcopy of COA with reconstitution instruction is sent along with the products. Please refer to it for detailed information.

## GENE INFORMATION

<b>Gene Name</b>	PICK1 protein interacting with PRKCA 1 [ Homo sapiens ]
<b>Official Symbol</b>	PICK1
<b>Synonyms</b>	PICK1; dJ1039K5; MGC15204; PICK; PRKCABP;
<b>Gene ID</b>	9463
<b>mRNA Refseq</b>	NM_001039583

 Tel: 1-631-559-9269 1-516-512-3133

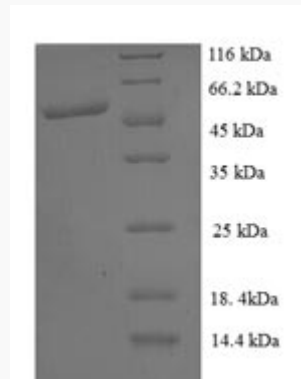
 Email: [info@creative-biomart.com](mailto:info@creative-biomart.com)  Fax: 1-631-938-8127

 45-1 Ramsey Road, Shirley, NY 11967, USA

**Protein Refseq** NP\_001034672

**MIM** 605926

**UniProt ID** Q9NRD5



(Tris-Glycine gel) Discontinuous SDS-PAGE (reduced) with 5% enrichment gel and 15% separation gel.

 Tel: 1-631-559-9269 1-516-512-3133

 Email: [info@creative-biomart.com](mailto:info@creative-biomart.com)  Fax: 1-631-938-8127

 45-1 Ramsey Road, Shirley, NY 11967, USA