

Recombinant Human PICK1 Protein, Myc/DDK-tagged, C13 and N15-labeled

Cat. No. PICK1-4063H **Lot. No.** (See product label)

SPECIFICATION

Product Overview	PICK1 MS Standard C13 and N15-labeled recombinant protein (NP_001034672) with a C-terminal MYC/DDK tag, was expressed in HEK293 cells.
Species	Human
Source	HEK293
Description	The protein encoded by this gene contains a PDZ domain, through which it interacts with protein kinase C, alpha (PRKCA). This protein may function as an adaptor that binds to and organizes the subcellular localization of a variety of membrane proteins. It has been shown to interact with multiple glutamate receptor subtypes, monoamine plasma membrane transporters, as well as non-voltage gated sodium channels, and may target PRKCA to these membrane proteins and thus regulate their distribution and function. This protein has also been found to act as an anchoring protein that specifically targets PRKCA to mitochondria in a ligand-specific manner. Three transcript variants encoding the same protein have been found for this gene.
Molecular Mass	46.6 kDa
AA Sequence	MFADLDYDIEEDKLGIP TVPGKVT LQKDAQNLIGISIGGGAQYCPLYIVQVFDNTPAA LDGTVAAGDEITGVNGRSIKGKTKVEVAKMIQEVKGEVTIHYNKLQADPKQGMSLDI VLKKVKHRLVENMSSGTADALGLSRAILCNDGLVKRLEELERTAELYKGMTEHTKNL LRAFYELSQTHRAFGDVFSVIGVREPQPAASEAFVKFADAHRSEIKFGIRLLKTIK PML

 Tel: 1-631-559-9269 1-516-512-3133

 Email: info@creative-biomart.com  Fax: 1-631-938-8127

 45-1 Ramsey Road, Shirley, NY 11967, USA

TDLNTYLNKAIPDTRLTIKKYLDVKFEYLSYCLKVKEMDDEEYSCIALGEPLYRVSTGN
 YEYRLILRCRQEARARFSQMRKDVLEKMELLDQKHVQDIVFQLQRLVSTMSKYND
 CYAVLRDADVFPPIEVDLAHTTLAYGLNQEEFTDGEEEEEEEDTAAGEPSRDTRGAA
 GPLDKGGSWCDSTRTRPLEQKLISEEDLAANDILDYKDDDDKV

Purity > 80% as determined by SDS-PAGE and Coomassie blue staining

Stability Stable for 3 months from receipt of products under proper storage and handling conditions.

Storage Store at -80 centigrade. Avoid repeated freeze-thaw cycles.

Concentration 50 µg/mL as determined by BCA

Storage Buffer 100 mM glycine, 25 mM Tris-HCl, pH 7.3.

GENE INFORMATION

Gene Name [PICK1 protein interacting with PRKCA 1 \[Homo sapiens \(human\) \]](#)

Official Symbol [PICK1](#)

Synonyms PICK1; protein interacting with PRKCA 1; PRKCABP, protein interacting with PRKCA, protein kinase C, alpha binding protein; PRKCA-binding protein; dJ1039K5; MGC15204; protein interacting with C kinase 1; protein kinase C-alpha-binding protein; PICK; PRKCABP;

Gene ID [9463](#)

mRNA Refseq [NM_001039583](#)

 Tel: 1-631-559-9269 1-516-512-3133

 Email: info@creative-biomart.com  Fax: 1-631-938-8127

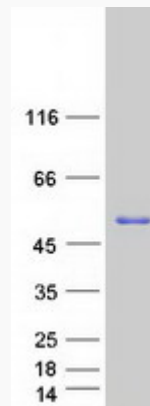
 45-1 Ramsey Road, Shirley, NY 11967, USA

Protein Refseq NP_001034672

MIM 605926

UniProt ID Q9NRD5

SDS-PAGE



 Tel: 1-631-559-9269 1-516-512-3133

 Email: info@creative-biomart.com  Fax: 1-631-938-8127

 45-1 Ramsey Road, Shirley, NY 11967, USA