

## Recombinant Human PICK1 Protein, GST-tagged

Cat. No. PICK1-661H Lot. No. (See product label)

### SPECIFICATION

**Product Overview** Recombinant Human PICK1 Full-Length ORF Protein (1-415 aa) is produced by Wheat Germ (in vitro) expression system. This protein is fused with a GST tag at the N-terminal.

**Species** Human

**Source** Wheat Germ

**ProteinLength** 1-415 aa

**Description** The protein encoded by this gene contains a PDZ domain, through which it interacts with protein kinase C, alpha (PRKCA). This protein may function as an adaptor that binds to and organizes the subcellular localization of a variety of membrane proteins. It has been shown to interact with multiple glutamate receptor subtypes, monoamine plasma membrane transporters, as well as non-voltage gated sodium channels, and may target PRKCA to these membrane proteins and thus regulate their distribution and function. This protein has also been found to act as an anchoring protein that specifically targets PRKCA to mitochondria in a ligand-specific manner. Three transcript variants encoding the same protein have been found for this gene.

**Form** 50 mM Tris-HCl, 10 mM reduced Glutathione, pH=8.0 in the elution buffer.

**Molecular Mass** 73 kDa

 Tel: 1-631-559-9269 1-516-512-3133

 Email: [info@creative-biomart.com](mailto:info@creative-biomart.com)  Fax: 1-631-938-8127

 45-1 Ramsey Road, Shirley, NY 11967, USA

|                     |   |
|---------------------|---|
| <b>AA Sequence</b>  | MFADLDYDIEEDKLGIPVPGKVTLQKDAQNLIGISIGGGAQYCPCLYIVQVFDNTPAA<br>LDGTVAAGDEITGVNGRSIKGKTKVEVAKMIQEVKGEVTIHYNKLQADPKQGMSLDI<br>VLKKVKHRLVENMSSGTADALGLSRAILCNDGLVKRLEELERTAELYKGMTEHTKNL<br>LRAFYELSQTHRAFQDVFSVIGVREPQPAASEAFVKFADAHRSEIKFGIRLLKTIKPMML<br>TDLNTYLNKAIPDTRLTIKKYLDVKFEYLSYCLVKEMDDEEYSCIALGEPLYRVSTGN<br>YEYRLILRCRQEARARFSQMRKDVLEKMELLDQKHVQDIVFQLQRLVSTMSKYND<br>CYAVLRDADVFPIDVLAHTTLAYGLNQEEFTDGEEDTAAGEPSRDTRGAA<br>GPLDKGGSWCDS |
| <b>Applications</b> | Enzyme-linked Immunoabsorbent Assay; Western Blot (Recombinant protein);<br>Antibody Production; Protein Array  |
| <b>Notes</b>        | Best use within three months from the date of receipt of this protein   |
| <b>Storage</b>      | Store at -80 centigrade. Aliquot to avoid repeated freezing and thawing.  |

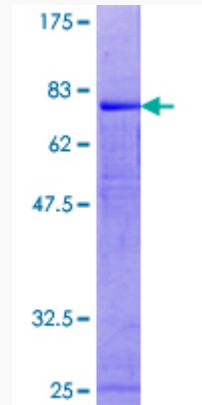
## GENE INFORMATION

|                        |   |
|------------------------|---|
| <b>Gene Name</b>       | PICK1 protein interacting with PRKCA 1 [ Homo sapiens (human) ] |
| <b>Official Symbol</b> | PICK1   |
| <b>Synonyms</b>        | MGC15204; PICK; PRKCABP;  |
| <b>Gene ID</b>         | 9463  |
| <b>mRNA Refseq</b>     | NM_012407   |
| <b>Protein Refseq</b>  | NP_036539   |
| <b>UniProt ID</b>      | Q9NRD5  |

 Tel: 1-631-559-9269 1-516-512-3133

 Email: [info@creative-biomart.com](mailto:info@creative-biomart.com)  Fax: 1-631-938-8127

 45-1 Ramsey Road, Shirley, NY 11967, USA



12.5% SDS-PAGE Stained with Coomassie Blue.

 Tel: 1-631-559-9269 1-516-512-3133

 Email: [info@creative-biomart.com](mailto:info@creative-biomart.com)  Fax: 1-631-938-8127

 45-1 Ramsey Road, Shirley, NY 11967, USA