

Recombinant Human PIEZO1 protein, His&Myc-tagged

Cat. No. PIEZO1-4643H Lot. No. (See product label)

SPECIFICATION

Product Overview	Recombinant Human PIEZO1 protein(Q92508)(2198-2431aa), fused with N-terminal His tag and C-terminal Myc tag, was expressed in E.coli.
Species	Human
Source	E.coli
ProteinLength	2198-2431a.a.
Tag	His&Myc
Form	If the delivery form is liquid, the default storage buffer is Tris/PBS-based buffer, 5%-50% glycerol. If the delivery form is lyophilized powder, the buffer before lyophilization is Tris/PBS-based buffer, 6% Trehalose, pH 8.0.
Molecular Mass	33.6 kDa
Purity	Greater than 90% as determined by SDS-PAGE.
Storage	Store at -20°C/-80°C upon receipt, aliquoting is necessary for mutiple use. Avoid repeated freeze-thaw cycles.
Reconstitution	We recommend that this vial be briefly centrifuged prior to opening to bring the contents to the bottom. Please reconstitute protein in deionized sterile water to a concentration of 0.1-1.0 mg/mL.We recommend to add 5-50% of glycerol (final

 Tel: 1-631-559-9269 1-516-512-3133

 Email: info@creative-biomart.com  Fax: 1-631-938-8127

 45-1 Ramsey Road, Shirley, NY 11967, USA

concentration) and aliquot for long-term storage at -20°C/-80°C.

AA Sequence

RSVVGVVNQPIDVTVTLKLGGEPLFTMSAQQPSIIPFTAQAYEELSRQFDPQPLAM
 QFISQYSPEDIVTAQIEGSSGALWRISPPSRAQMKRELYNGTADITLRFTWNFQRDL
 AKGGTVEYANEKHMALAPNSTARRQLASLLEGTSDQSVVIPNLFPKYIRAPNGPEA
 NPVKQLQPNEEADYLGVRIQLRREQGAGATGFLEWWVIELQECRTDCNLLPMVIFS
 DKVSPPS

GENE INFORMATION

Gene Name

[PIEZO1 piezo-type mechanosensitive ion channel component 1 \[Homo sapiens \]](#)

Official Symbol

[PIEZO1](#)

Synonyms

PIEZO1; piezo-type mechanosensitive ion channel component 1; FAM38A, family with sequence similarity 38, member A; KIAA0233; protein PIEZO1; family with sequence similarity 38, member A; membrane protein induced by beta-amyloid treatment; Mib; FAM38A;

Gene ID

[9780](#)

mRNA Refseq

[NM_001142864](#)

Protein Refseq

[NP_001136336](#)

MIM

[611184](#)

UniProt ID

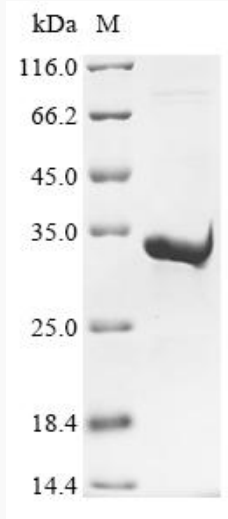
[Q92508](#)

 Tel: 1-631-559-9269 1-516-512-3133

 Email: info@creative-biomart.com  Fax: 1-631-938-8127

 45-1 Ramsey Road, Shirley, NY 11967, USA

SDS-PAGE



 Tel: 1-631-559-9269 1-516-512-3133

 Email: info@creative-biomart.com  Fax: 1-631-938-8127

 45-1 Ramsey Road, Shirley, NY 11967, USA