

## Active Recombinant Human PIGR Protein, His-tagged

**Cat. No.** PIGR-013H    **Lot. No.** (See product label)

### SPECIFICATION

<b>Product Overview</b>	Recombinant human plgR, fused to His-tag at C terminus, was expressed in insect cell and purified by using conventional chromatography techniques.
<b>Species</b>	Human
<b>Source</b>	Insect cells
<b>Description</b>	This gene is a member of the immunoglobulin superfamily. The encoded poly-Ig receptor binds polymeric immunoglobulin molecules at the basolateral surface of epithelial cells; the complex is then transported across the cell to be secreted at the apical surface. A significant association was found between immunoglobulin A nephropathy and several SNPs in this gene.
<b>Form</b>	Liquid
<b>Bio-activity</b>	Measured by its binding ability in a functional ELISA with Human IgM. The ED50 range $\leq 10 \mu\text{g/mL}$ .
<b>Molecular Mass</b>	68.9 kDa
<b>AA Sequence</b>	<p>           KSPIFGPEEVNSVEGNSVSITCYYPPTSVNRHTRKYWCRQGARGGCITLISSEGYVS            SKYAGRANLTNFPENGTFVVNIAQLSQDDSGRYKCGLGINSRGLSFDVSLEVSQGP            GLLNDTKVYTVDLGRTVTINCPFKTENAQKRKSLYKQIGLYPVLVIDSSGYVNPNYTG            RIRLDIQGTGQLLFSVVINQLRLSDAGQYLCQAGDDSNSNKNADLQVLKPEPELVY            EDLRGSVTFHCALGPEVANVAKFLCRQSSGENCDVVVNTLGKRAPAFEGRILLNPQ         </p>

 Tel: 1-631-559-9269    1-516-512-3133

 Email: [info@creative-biomart.com](mailto:info@creative-biomart.com)     Fax: 1-631-938-8127

 45-1 Ramsey Road, Shirley, NY 11967, USA

DKDGSFSVVITGLRKEDAGRYLCSGAHSDGQLQEGSPIQAWQLFVNEESTIPRSPTV  
 VKGVAGGSAVAVLCPYNRKESKSIKYWCLWEGAQNGRCPLLVDSEGWVKAQYEGR  
 LSLLEPGNGTFTVILNQLTSRDAGFYWCLTNGDTLWRTTVEIKIIEGEPNLKVPNGV  
 TAVLGETLKVPCHPCKFSSYEKYWCKWNNTGCQALPSQDEGPSKAFVNCDENSR  
 LVSLTLNLVTRADEGWYWCGVKQGHFYGETAAVYVAVEERKAAGSRDVSLAKADA  
 APDEKVLDSGFREIENKAIQDPRLF AEEKAVADTRDQADGSRASVDSGSSEEQGG  
 SR

<b>Endotoxin</b>	< 1 EU/μg of protein (determined by LAL method)
<b>Purity</b>	> 95% by SDS-PAGE
<b>Applications</b>	SDS-PAGE, Bioactivity
<b>Storage</b>	Can be stored at +2 to +8 centigrade for 1 week. For long term storage, aliquot and store at -20 to -92 centigrade. Avoid repeated freezing and thawing cycles.
<b>Concentration</b>	1 mg/mL (determined by Absorbance at 280nm)
<b>Storage Buffer</b>	Phosphate-Buffered Saline (pH 7.4) containing 10% glycerol

## GENE INFORMATION

<b>Gene Name</b>	PIGR polymeric immunoglobulin receptor [ Homo sapiens (human) ]
<b>Official Symbol</b>	PIGR
<b>Synonyms</b>	PIGR; polymeric immunoglobulin receptor; polymeric immunoglobulin receptor; hepatocellular carcinoma associated protein TB6; poly-Ig receptor
<b>Gene ID</b>	5284

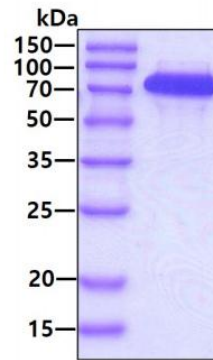
mRNA Refseq [NM\\_002644](#)

Protein Refseq [NP\\_002635](#)

MIM [173880](#)

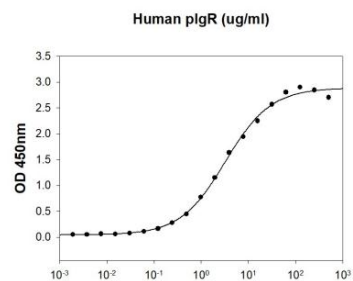
UniProt ID [P01833](#)

#### SDS-PAGE



3  $\mu$ g by SDS-PAGE under reducing condition and visualized by coomassie blue stain

#### Biological Activity



Tel: 1-631-559-9269 1-516-512-3133

Email: [info@creative-biomart.com](mailto:info@creative-biomart.com) Fax: 1-631-938-8127

45-1 Ramsey Road, Shirley, NY 11967, USA



Human IgM is coated at 2  $\mu\text{g}/\text{mL}$  (100  $\mu\text{L}/\text{well}$ ) can bind Human pIgR. The ED50 range  $\leq 10$   $\mu\text{g}/\text{mL}$ .

 Tel: 1-631-559-9269 1-516-512-3133

 Email: [info@creative-biomart.com](mailto:info@creative-biomart.com)  Fax: 1-631-938-8127

 45-1 Ramsey Road, Shirley, NY 11967, USA