

## Recombinant Human PIGR protein, His-tagged

**Cat. No.** PIGR-830H    **Lot. No.** (See product label)

### SPECIFICATION

<b>Product Overview</b>	Recombinant Human PIGR protein (Lys19-Arg638), fused to His tag at C-terminus, was expressed in human 293 cells (HEK293).
<b>Species</b>	Human
<b>Source</b>	HEK293
<b>ProteinLength</b>	620
<b>Description</b>	<p>Polymeric immunoglobulin receptor (PIGR) is also known as Poly-Ig receptor, which can be cleaved into membrane secretory component (SC). PIGR is a type I transmembrane glycoprotein or a member of the immunoglobulin superfamily, and is synthesized by secretory epithelial cells and delivered to the basolateral plasma membrane where it can bind larger polymers of IgA (pIgA) and pentameric IgM. The complex is then transported across the cell to be secreted at the apical surface. During this process a cleavage occurs that separates the extracellular (known as the secretory component) from the transmembrane segment.</p>
<b>Form</b>	Lyophilized from 0.22 um filtered solution in PBS, pH7.4, 10% trehalose.
<b>Molecular Mass</b>	The protein has a calculated MW of 68.7 kDa. The protein migrates as 85-95 kDa under reducing (R) condition (SDS-PAGE) due to glycosylation.
<b>Endotoxin</b>	Less than 1.0 EU per ug by the LAL method.

 Tel: 1-631-559-9269    1-516-512-3133

 Email: [info@creative-biomart.com](mailto:info@creative-biomart.com)     Fax: 1-631-938-8127

 45-1 Ramsey Road, Shirley, NY 11967, USA

<b>Purity</b>	>98% as determined by SDS-PAGE.
<b>Storage</b>	<p>For long term storage, the product should be stored at lyophilized state at -20 centigrade or lower.</p> <p>Please avoid repeated freeze-thaw cycles.</p> <p>This product is stable after storage at:</p> <p>-20 centigrade to -70 centigrade for 12 months in lyophilized state;          -70 centigrade for 3 months under sterile conditions after reconstitution.</p>
<b>Reconstitution</b>	It is recommended that sterile water be added to the vial to prepare a stock solution of 0.2 ug/ul. Centrifuge the vial at 4°C before opening to recover the entire contents.

## GENE INFORMATION

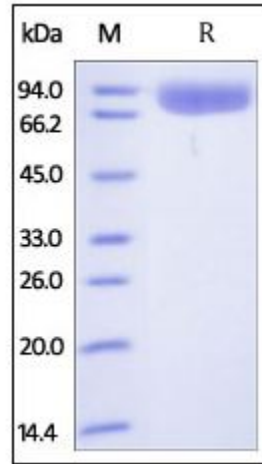
<b>Gene Name</b>	PIGR
<b>Official Symbol</b>	PIGR
<b>Synonyms</b>	PIGR; polymeric immunoglobulin receptor; poly-Ig receptor; hepatocellular carcinoma associated protein TB6; hepatocellular carcinoma-associated protein TB6; FLJ22667; MGC125361; MGC125362
<b>Gene ID</b>	5284
<b>mRNA Refseq</b>	NM_002644
<b>Protein Refseq</b>	NP_002635
<b>MIM</b>	173880
<b>UniProt ID</b>	P01833

 Tel: 1-631-559-9269 1-516-512-3133

 Email: [info@creative-biomart.com](mailto:info@creative-biomart.com)  Fax: 1-631-938-8127

 45-1 Ramsey Road, Shirley, NY 11967, USA

**SDS-PAGE of PIGR-830H**



Human pIgR, His Tag on SDS-PAGE under reducing (R) condition. The gel was stained overnight with Coomassie Blue. The purity of the protein is greater than 98%.

 Tel: 1-631-559-9269 1-516-512-3133

 Email: [info@creative-biomart.com](mailto:info@creative-biomart.com)  Fax: 1-631-938-8127

 45-1 Ramsey Road, Shirley, NY 11967, USA