

Recombinant Human PIGU Protein, GST-Tagged

Cat. No. PIGU-1325H **Lot. No.** (See product label)

SPECIFICATION

Product Overview	Human PIGU partial ORF (NP_536724, 101 a.a. - 165 a.a.) recombinant protein with GST-tag at N-terminal.
Species	Human
Source	Wheat Germ
Description	The protein encoded by this gene shares similarity with <i>Saccharomyces cerevisiae</i> Cdc91, a predicted integral membrane protein that may function in cell division control. The protein encoded by this gene is the fifth subunit of GPI transamidase that attaches GPI-anchors to proteins. [provided by RefSeq, Jul 2008]
Molecular Mass	32.89 kDa
AA Sequence	DFNKVVFKKQKLLLELDQYAPDVAELIRTPMEMRYIPLKVALFYLLNPYTLSCVAKST CAINNT
Applications	Enzyme-linked Immunoabsorbent Assay Western Blot (Recombinant protein) Antibody Production Protein Array
Storage	Store at -80 centigrade. Aliquot to avoid repeated freezing and thawing.
Storage Buffer	50 mM Tris-HCl, 10 mM reduced Glutathione, pH=8.0 in the elution buffer.

 Tel: 1-631-559-9269 1-516-512-3133

 Email: info@creative-biomart.com  Fax: 1-631-938-8127

 45-1 Ramsey Road, Shirley, NY 11967, USA

GENE INFORMATION

Gene Name [PIGU phosphatidylinositol glycan anchor biosynthesis, class U \[Homo sapiens \]](#)

Official Symbol [PIGU](#)

Synonyms [PIGU](#); [phosphatidylinositol glycan anchor biosynthesis, class U](#); [GAB1](#); [CDC91L1](#); [phosphatidylinositol glycan anchor biosynthesis class U protein](#); [protein CDC91-like 1](#); [GPI transamidase subunit](#); [GPI transamidase component PIG-U](#); [cell division cycle 91-like 1 protein](#); [cell division cycle protein 91-like 1](#); [CDC91 \(cell division cycle 91, S. cerevisiae, homolog\)-like 1](#); [bA346K17.2](#); [CDC91 cell division cycle 91-like 1 \(S. cerevisiae\)](#)

Gene ID [28869](#)

mRNA Refseq [NM_080476](#)

Protein Refseq [NP_536724](#)

MIM [608528](#)

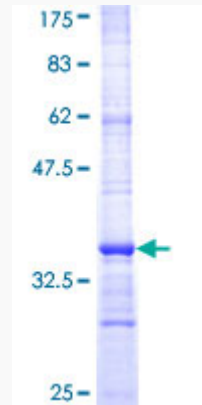
UniProt ID [Q9H490](#)

 Tel: 1-631-559-9269 1-516-512-3133

 Email: info@creative-biomart.com  Fax: 1-631-938-8127

 45-1 Ramsey Road, Shirley, NY 11967, USA

**Quality Control
Testing**



12.5% SDS-PAGE Stained with Coomassie Blue.

 Tel: 1-631-559-9269 1-516-512-3133

 Email: info@creative-biomart.com  Fax: 1-631-938-8127

 45-1 Ramsey Road, Shirley, NY 11967, USA