

Recombinant Human PIH1D1 Protein, GST-tagged

Cat. No. PIH1D1-4262H Lot. No. (See product label)

SPECIFICATION

Product Overview	Human FLJ20643 full-length ORF (AAH01108, 1 a.a. - 290 a.a.) recombinant protein with GST-tag at N-terminal.
Species	Human
Source	Wheat Germ
Description	PIH1D1 (PIH1 Domain Containing 1) is a Protein Coding gene.
Molecular Mass	57.64 kDa
AA Sequence	<p>MANPKLLGLELSEAEAIGADSARFEELLQASKELQQAQTTRPESTQIQPPGFCIKT NSSEGKVFINICHSPSIPPPADVTEEELLQMLEEDQAGFRIPMSLGEPHAELDAKGG GCTAYDVAVNSDFYRRMQNSDFLRELVITAREGLEDKYNLQLNPEWRMMKNRPFM GSISQQNIRSEQRPRIQELGDLYTPAPGRAESGPEKPHLNLWLEAPDLLLAEIDLPKL DGALGLSLEIGENRLVMGGPQQLYHLDAYIPLQINSHESKAAFHRKRKQLMVAMPLL LVPS</p>
Applications	<p>Enzyme-linked Immunoabsorbent Assay Western Blot (Recombinant protein) Antibody Production Protein Array</p>
Notes	Best use within three months from the date of receipt of this protein.

 Tel: 1-631-559-9269 1-516-512-3133

 Email: info@creative-biomart.com  Fax: 1-631-938-8127

 45-1 Ramsey Road, Shirley, NY 11967, USA

Storage Store at -80 centigrade. Aliquot to avoid repeated freezing and thawing.

Storage Buffer 50 mM Tris-HCl, 10 mM reduced Glutathione, pH=8.0 in the elution buffer.

GENE INFORMATION

Gene Name [PIH1D1 PIH1 domain containing 1 \[Homo sapiens \]](#)

Official Symbol [PIH1D1](#)

Synonyms PIH1D1; PIH1 domain containing 1; NOP17; PIH1 domain-containing protein 1; FLJ20643; nucleolar protein 17 homolog;

Gene ID [55011](#)

mRNA Refseq [NM_017916](#)

Protein Refseq [NP_060386](#)

MIM [611480](#)

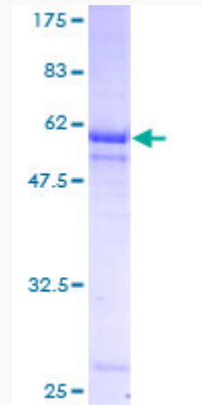
UniProt ID [Q9NWS0](#)

 Tel: 1-631-559-9269 1-516-512-3133

 Email: info@creative-biomart.com  Fax: 1-631-938-8127

 45-1 Ramsey Road, Shirley, NY 11967, USA

**Quality Control
Testing**



12.5% SDS-PAGE Stained with Coomassie Blue.

 Tel: 1-631-559-9269 1-516-512-3133

 Email: info@creative-biomart.com  Fax: 1-631-938-8127

 45-1 Ramsey Road, Shirley, NY 11967, USA